

AirClean Fusion

Modular granite paving with AirClean.

Produced with a striking granite aggregate surface layer and available in two long-lasting colours, this modular granite paving opens up endless possibilities for creative paving patterns and designs, so you can achieve exactly the right look for your project while benefiting the environment.

- Improves air quality by reducing harmful NO₂
- Transforms NO₂ into harmless nitrates
- Tried and tested photocatalytic technology
- Manufactured with natural granite aggregates
- Superb hard-wearing granite surface
- Vibrant long-lasting colours
- Creates a striking, contemporary look

✓ PrimeTop®

TGA

Textured
Granite Aggregate

Finish

✓ Ef-Stop®



Pedestrian
Use



Light
Traffic



Commercial
Traffic

Refer to relevant guidance in BS 7533



200 x 100mm



300 x 200mm



300 x 300mm

Sizes



80mm

Depths



AirClean Fusion



Specification

PrimeTop® **Ef-Stop**®

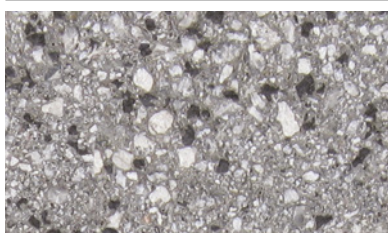
AirClean	Up to 16% NO ₂ reduction (average 4%-16% reduction)
Product type	Concrete Paving Block
Manufactured to	BS EN 1338:2003
Surface layer	Hard wearing surface layer with a minimum of 4mm and >350kgs/m ² cement
Surface finish	Textured Granite Aggregate
Granite content	Not less than 53% of granite aggregate in surface layer
Efflorescence	Minimum 12 hour vapour curing to significantly reduce the possibility of efflorescence
Strength	Typical tensile splitting strength of >3.6MPa
Slip/skid risk	Extremely Low
Installed to	BS 7533-3:2005
BS Plus	Plus D41 310 Create 45-80-50/322
Applications	Refer to the relevant part of BS 7533 for the correct sub-base design and the most suitable product size for your application. Available from www.bsigroup.com
Energy used	100% renewable energy
Water used	100% from our rainwater harvesting system and groundwater bore hole
Recycled content	Not less than 6%
Carbon footprint	34kgCo ₂ e/m ²
Recyclable	100% of this product can be recycled
Manufacturing & Delivery	From one location within the UK
breem rating www.bre.co.uk	B , according to the Green Guide to Specification, 4th Edition 2009. A , can be achieved when used in conjunction with a prepared recycled sub-base.

Tobermore products are manufactured in accordance with an accredited ISO 9001:2015 Quality Management. Manufacturing facilities are accredited to ISO14001:2015 Environmental Management. The company publish environmental labels and declarations in accordance with BES 6001.

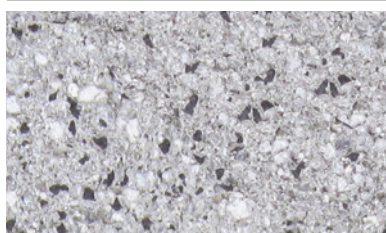
Stock

product	size (mm)	colours available	in stock	m ² per pack	m ² per slice	no. per m ²	no. per pack	weight kg per pack GB	weight kg per pack NI/ROI
AirClean Fusion	200 x 100 x 80	Mid Grey, Silver	SO	9.60	1.6	50	480	1756	1746
	300 x 200 x 80	Mid Grey, Silver	SO	9.60	2.4	16.66	160	1756	1746
	300 x 300 x 80	Mid Grey, Silver	SO	7.20	1.8	11.11	80	1319	1309

Mid Grey



Silver



IMPORTANT INFORMATION

Tobermore recommend that you separate product groups using contrasting bands of colour as each product is manufactured separately and may have slight variations in colour.

Contact Us

GB: 0844 800 5736
NI: 028 7964 2411
ROI: 048 7964 2411

Email

technical@tobermore.co.uk
sales@tobermore.co.uk

tobermore.co.uk