



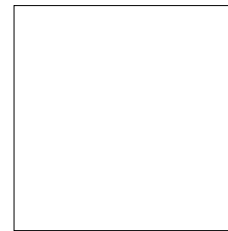
SCAN HERE

# Mayfair Step Flags

Granite effect step flags and risers.

If you're looking for superior concrete step flags with an elegant modern appearance, Mayfair Step Flags are a great choice. This product is ideal for creating a natural granite effect due to the eye-catching granite aggregate surface layer.

- Manufactured with natural granite aggregates
- Superb hard-wearing granite surface
- Vibrant long-lasting colours
- Creates a striking, contemporary look
- Flags and risers



400 x 400mm

**Sizes**

40mm

**Depths****✓ PrimeTop®** **✓ Ef-Stop®****TGA**Textured  
Granite Aggregate

Finish

Pedestrian  
Use

Refer to relevant guidance in BS 7533



# Mayfair Step Flags



## Specification

 **PrimeTop**  **Ef-Stop**

<b>Product type</b>	Concrete Paving Flag
<b>Manufactured to</b>	BS EN 1339:2003
<b>Surface Layer</b>	Hard-wearing surface layer with a minimum of 4mm and >390kg/m <sup>3</sup> cement
<b>Granite Content</b>	Not less than 57% of granite aggregate in surface layer for Silver and Graphite; Not less than 46% of granite aggregate in surface layer for Sandstone.
<b>Efflorescence</b>	Minimum 12 hour vapour curing to significantly reduce the possibility of efflorescence
<b>Strength</b>	<b>Less than 50mm deep</b> Typical tensile splitting strength of >3.5MPa <b>50mm or greater</b> Typical tensile splitting strength of >5MPa (Class 3)
<b>Slip/Skid risk</b>	Extremely Low
<b>Installed to</b>	BS 7533-4:2006
<b>BS Plus</b>	<b>Plus</b> Q25 315 <b>Create</b> 45-20-64/395
<b>Tolerances on Dimensions (mm)</b>	Length ±2mm, width ±2mm, thickness ±3mm
<b>Abrasion Resistance</b>	Class 3
<b>Durability (Freeze-thaw)</b>	Class 3
<b>External Fire Performance</b>	Deemed to satisfy. See Commission Decision 2000/553/EC
<b>Reaction to fire</b>	Class A1
<b>Applications</b>	This product should be designed into projects using guidance from the Building Regulations, British Standards and any other relevant documents.
<b>Energy used</b>	100% renewable energy
<b>Water used</b>	100% from our rainwater harvesting system and groundwater bore hole
<b>Recycled content</b>	Not less than 6%
<b>Carbon Footprint</b>	<b>Edge Step</b> 16kgCo2e/m <sup>2</sup> <b>Corner Step</b> 16kgCo2e/m <sup>2</sup>
<b>Recyclable</b>	100% of this product can be recycled
<b>Manufacturing &amp; Delivery</b>	From one location within the UK
<b>breem rating</b> www.bre.co.uk	<b>A</b> , according to the Green Guide to Specification, 4 <sup>th</sup> Edition 2009. <b>A+</b> can be achieved by using a recycled sub-base.

Tobermore products are manufactured in accordance with an accredited ISO 9001:2015 Quality Management. Manufacturing facilities are accredited to ISO14001:2015 Environmental Management. The company publish environmental labels and declarations in accordance with BES 6001.

### Contact Us

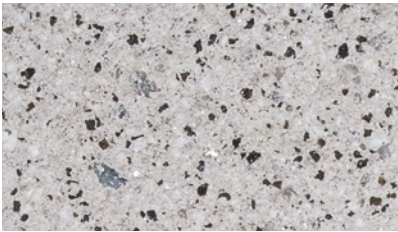
GB: 0844 800 5736  
NI: 028 7964 2411  
ROI: 048 7964 2411

### Email

technical@tobermore.co.uk  
sales@tobermore.co.uk

**tobermore.co.uk**

# Mayfair Step Flags

**Silver**


The colour of Mayfair Step Flags may slightly vary to the normal Mayfair Flag.

**Stock**

product	size (mm)	finish	edge	colours available	in stock	no. per m <sup>2</sup>	no. per pack	no. per pallet	weight kg per pack GB	weight kg per pack NI/ROI
<b>Mayfair Edge Step</b>	400 x 400 x 40	Granite Textured (Top & 1 edge)	Chamfered	Silver	YES	6.25	25	100	403	401
<b>Mayfair Corner Step</b>	400 x 400 x 40	Granite Textured (Top & 2 edges)	Chamfered	Silver	YES	6.25	25	100	403	401
<b>Mayfair Step Riser</b>	400 x 170 x 40	Granite Textured	Chamfered	Silver	YES	-	25	100	195	192

Important: Tobermore recommend that compliance is sought from Building Control prior to the installation of any of its step products.


**Contact Us**

GB: 0844 800 5736  
 NI: 028 7964 2411  
 ROI: 048 7964 2411

**Email**

technical@tobermore.co.uk  
 sales@tobermore.co.uk