

# Mayfair Flags

Granite aggregate paving slabs.

Mayfair flags have a sophisticated, modern feel. Manufactured with natural granite aggregates, Mayfair flags have a hard-wearing, durable surface and come in four natural colours.

- Manufactured with natural granite aggregates
- Superb hard-wearing granite surface
- Vibrant long-lasting colours
- Creates a striking, contemporary look

 **PrimeTop®**
 **Ef-Stop®**
 **EasyClean**

## TGA

Textured  
Granite Aggregate

Finish



Steps

Also available as



Pedestrian  
Use



Light  
Traffic



Commercial  
Traffic

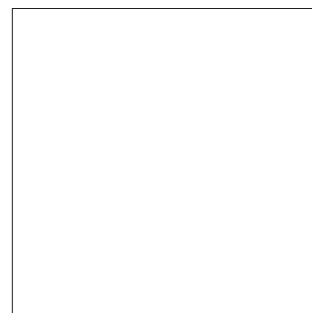


BIM  
Level 2

Refer to relevant guidance in BS 7533



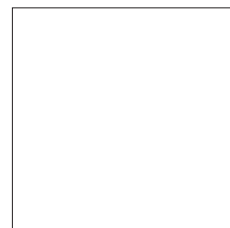
SCAN HERE



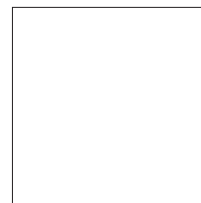
600 x 600mm



600 x 400mm



450 x 450mm



400 x 400mm

## Sizes



80mm  
60mm  
50mm  
40mm  
35mm

## Depths





# Mayfair Flags



## Specification

 **PrimeTop**  **Ef-Stop**

<b>Product type</b>	Concrete Paving Flag
<b>Manufactured to</b>	BS EN 1339:2003
<b>Surface Layer</b>	Hard-wearing surface layer with a minimum of 4mm and >390kgs/m <sup>3</sup> cement
<b>Chamfer</b>	Chamfered
<b>Granite content</b>	Not less than 57% of granite aggregate in surface layer for Silver and Graphite; Not less than 46% of granite aggregate in surface layer for Sandstone & Oat
<b>Efflorescence</b>	Minimum 12 hour vapour curing to significantly reduce the possibility of efflorescence
<b>Bending Strength</b>	<b>Less than 50mm deep</b> Characteristic tensile splitting strength not less than 3.6 MPa <b>50mm or greater</b> Characteristic tensile splitting strength of >5MPa (Class 3)
<b>Slip/Skid Resistance</b>	Mean polished skid resistance value (PSRV) >45 Mean unpolished skid resistance value (USRV) >45
<b>Installed to</b>	BS 7533-4:2006
<b>BS</b>	<b>Plus</b> Q25 315 <b>Create</b> 45-20-64/395
<b>Tolerances on Dimensions (mm)</b>	Length ±3mm, width ±3mm, thickness ±3mm
<b>Abrasion Resistance (mm)</b>	≤ 23mm (Wide Wheel Abrasion Test) Class 3
<b>Durability (Freeze-thaw)</b>	≤ 1.0 kg/m <sup>2</sup> as a mean with no individual value > 1.5 kg/m <sup>2</sup> Class 3
<b>External Fire Performance</b>	Deemed to satisfy when used for roofing
<b>Reaction to fire</b>	Class A1
<b>Applications</b>	Refer to the relevant part of BS 7533 for the correct sub-base design and the most suitable product size for your application. Available from <a href="http://www.bsigroup.com">www.bsigroup.com</a>
<b>Energy used</b>	100% renewable energy
<b>Water used</b>	100% from our rainwater harvesting system and groundwater bore hole
<b>Recycled content</b>	Not less than 6%
 <b>Carbon Footprint</b>	<b>EPD Verified (2020)</b> <b>400x400x40mm</b> 10.43kgCo <sub>2</sub> e/m <sup>2</sup> <b>450x400x35mm</b> 8.96kgCo <sub>2</sub> e/m <sup>2</sup> <b>450x450x50mm</b> 12.51kgCo <sub>2</sub> e/m <sup>2</sup> <b>600x400x50mm</b> 13.19kgCo <sub>2</sub> e/m <sup>2</sup> <b>600x600x50mm</b> 12.54kgCo <sub>2</sub> e/m <sup>2</sup>
<b>Recyclable</b>	100% of this product can be recycled
<b>Manufacturing &amp; Delivery</b>	From one location within the UK
 <b>rating</b> <a href="http://www.bre.co.uk">www.bre.co.uk</a>	<b>A</b> , according to the Green Guide to Specification, 4 <sup>th</sup> Edition 2009. <b>A+</b> can be achieved by using a recycled sub-base.

Tobermore products are manufactured in accordance with an accredited ISO 9001:2015 Quality Management. Manufacturing facilities are accredited to ISO14001:2015 Environmental Management. The company publish environmental labels and declarations in accordance with BES 6001.

## Contact Us

GB: 0844 800 5736  
NI: 028 7964 2411  
ROI: 048 7964 2411

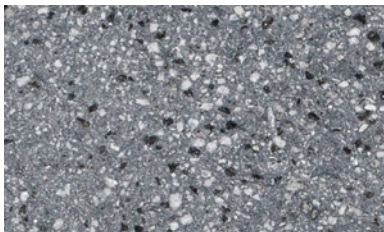
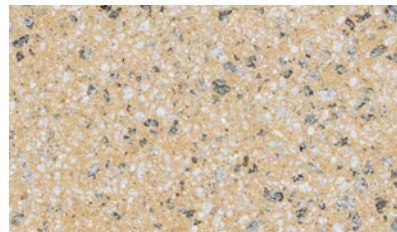
## Email

[technical@tobermore.co.uk](mailto:technical@tobermore.co.uk)  
[sales@tobermore.co.uk](mailto:sales@tobermore.co.uk)

[tobermore.co.uk](http://tobermore.co.uk)

# Mayfair Flags


**Silver**

**Graphite**

**Sandstone**

**Oat**


## Stock

product	size (mm)	edge	colours available	in stock	no. per m <sup>2</sup>	no. per pack	no. per pallet	weight kg per pack GB	weight kg per pack NI/ROI
<b>Mayfair Flags</b> BIM	600 x 600 x 50	Chamfered	Graphite, Oat, Sandstone, Silver	YES	2.78	20	20	859	851
	600 x 400 x 50	Chamfered	Graphite, Oat, Sandstone, Silver	YES	4.16	20	40	584	580
	450 x 450 x 50	Chamfered	Graphite, Oat, Sandstone, Silver	YES	4.94	20	80	466	466
	450 x 450 x 35	Chamfered	Graphite, Oat, Sandstone, Silver	YES	4.94	30	120	529	525
	400 x 400 x 40	Chamfered	Graphite, Oat, Sandstone, Silver	YES	6.25	25	100	384	382
	800 x 800 x 60	Chamfered	Graphite, Silver	YES	8.32	13	13	1154	1134
	800 x 800 x 80	Chamfered	Graphite, Silver	YES	6.4	10	10	1183	1163

**BIM** - This product is available to download from our website in BIM Level 2 format.

### Contact Us

GB: 0844 800 5736  
NI: 028 7964 2411  
ROI: 048 7964 2411

### Email

technical@tobermore.co.uk  
sales@tobermore.co.uk

**tobermore.co.uk**