

# Hydropave Fusion


**SCAN HERE**

Permeable paving with natural granite aggregates.

Hydropave Fusion is a popular permeable block paving product, manufactured with a natural granite appearance creating a striking, contemporary look.

- Functions as a SuDS paving system
- Granite appearance
- Manufactured with natural granite aggregates
- Superb hard-wearing granite surface
- Vibrant long-lasting colours
- Creates a striking, contemporary look



200 x 100mm

**Sizes**


80mm

**Depths**
 **PrimeTop®**
 **Ef-Stop®**
**TGA**

Textured  
Granite Aggregate

**Finish**

Pedestrian  
Use

Light  
Traffic

Commercial  
Traffic

Refer to relevant guidance in BS 7533





# Hydropave Fusion



## Specification

 **PrimeTop®**  **Ef-Stop®**

<b>Product type</b>	Concrete Paving Block
<b>Manufactured to</b>	BS EN 1338:2003
<b>Surface Layer</b>	Hard-wearing surface layer with a minimum of 4mm and >350kgs/m <sup>3</sup> cement
<b>Surface Finish</b>	Textured Granite Aggregate
<b>Granite Content in Surface Layer</b> (Not less than %)	<b>53%</b> Silver, Graphite, Mid Grey <b>45%</b> Sandstone
<b>Efflorescence</b>	Minimum 12 hour vapour curing to significantly reduce the possibility of efflorescence
<b>Drainage Void Width</b>	5.5% to accommodate correct grit grading, reduce maintenance and maximise drainage flow rate
<b>Tensile Splitting Strength</b>	Typical tensile splitting strength of >3.6MPa
<b>Slip/Skid Resistance</b>	Mean polished skid resistance value (PSRV) >45 Mean unpolished skid resistance value (USRV) >45
<b>Installed to</b>	BS 7533-3:2005
<b>NS</b>	<b>Plus</b> Q24 115 <b>Create</b> 45-20-64/400 <b>Plus</b> Q24 117 <b>Create</b> 45-20-64/400 <b>Plus</b> Q24 119 <b>Create</b> 45-20-64/400
<b>Tolerances on Dimensions (mm)</b>	Length ±2mm, width ±2mm, thickness ±3mm
<b>Abrasion Resistance</b>	≤ 23mm (Wide Wheel Abrasion Test) Class 3
<b>Durability (Freeze-thaw)</b>	≤ 1.0 kg/m <sup>2</sup> as a mean with no individual value > 1.5 kg/m <sup>2</sup> Class 3
<b>External Fire Performance</b>	Deemed to satisfy when used for roofing
<b>Reaction to fire</b>	Class A1
<b>Applications</b>	Refer to the relevant part of BS 7533 for the correct sub-base design and the most suitable product size for your application. Available from <a href="http://www.bsigroup.com">www.bsigroup.com</a>
<b>Energy used</b>	100% renewable energy
<b>Water used</b>	100% from our rainwater harvesting system and groundwater bore hole
<b>Recycled content</b>	Not less than 6%
 <b>Carbon Footprint</b>	<b>EPD Verified (2020)</b> 24.36kgCO <sub>2</sub> e/m <sup>2</sup>
<b>Recyclable</b>	100% of this product can be recycled
<b>Manufacturing &amp; Delivery</b>	From one location within the UK
 <b>Breeam rating</b> <a href="http://www.bre.co.uk">www.bre.co.uk</a>	<b>B</b> , according to the Green Guide to Specification, 4 <sup>th</sup> Edition 2009. <b>A</b> , can be achieved by using a recycled sub-base.

Tobermore products are manufactured in accordance with an accredited ISO 9001:2015 Quality Management. Manufacturing facilities are accredited to ISO14001:2015 Environmental Management. The company publish environmental labels and declarations in accordance with BES 6001.

## Contact Us

GB: 0844 800 5736  
NI: 028 7964 2411  
ROI: 048 7964 2411

## Email

[technical@tobermore.co.uk](mailto:technical@tobermore.co.uk)  
[sales@tobermore.co.uk](mailto:sales@tobermore.co.uk)

[tobermore.co.uk](http://tobermore.co.uk)



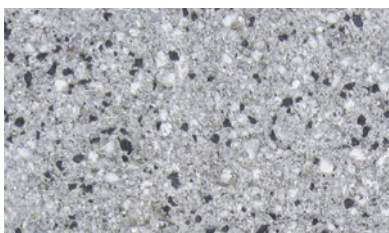
# Hydropave Fusion



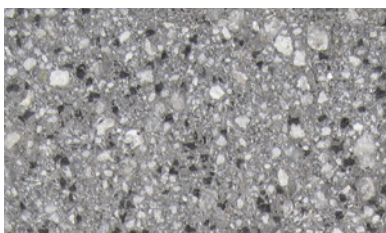
## Stock

product	size (mm)	colours available	in stock	m <sup>2</sup> per pack	m <sup>2</sup> per slice	no. per m <sup>2</sup>	no. per pack	weight kg per pack GB	weight kg per pack NI/ROI
<b>Hydropave Fusion</b>	200 x 100 x 80	Graphite, Mid Grey, Sandstone, Silver	YES	9.6	1.6	50	480	1739	1729

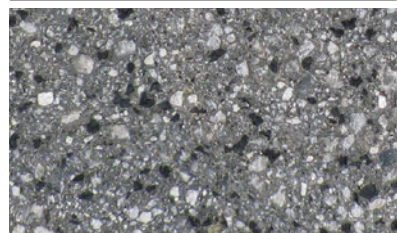
### Silver



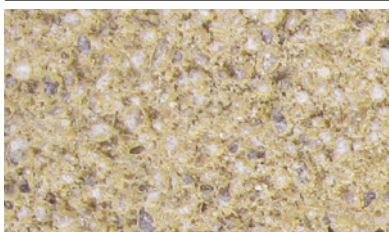
### Mid Grey



### Graphite



### Sandstone



## Contact Us

GB: 0844 800 5736  
NI: 028 7964 2411  
ROI: 048 7964 2411

## Email

technical@tobermore.co.uk  
sales@tobermore.co.uk

[tobermore.co.uk](http://tobermore.co.uk)