






# Braemar Flags

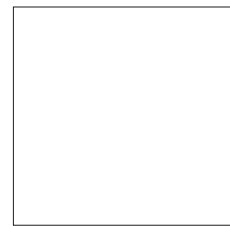
High performance paving with the aesthetic appeal of natural stone.

- Premium flag
- Diamond ground in two finish options
- Manufactured with natural granite aggregates
- Superb hard-wearing granite surface
- Vibrant long-lasting colours
- Creates a striking, contemporary look
- Readily available with much shorter lead times than natural stone
- Cost effective alternative to natural stone

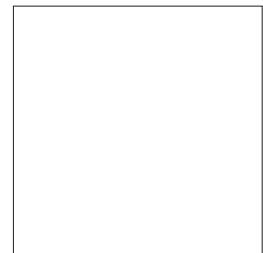
 **PrimeTop**

 **Ef-Stop**

<b>GT</b> Ground Textured <b>Finish</b>	<b>G</b> Ground	 Steps	 AirClean	 Pedestrian Use	 Light Traffic	 BIM Level 2
<b>Also available as</b>				Refer to relevant guidance in BS 7533		



400 x 400mm



450 x 450mm



600 x 400mm

**Sizes**



50mm

**Depths**

# Braemar Flags



## Specification

 **PrimeTop**  **Ef-Stop**

<b>Product type</b>	Concrete Paving Flag
<b>Manufactured to</b>	BS EN 1339:2003
<b>Granite content</b>	Not less than 63.3% of granite aggregate in surface layer for Alto Silver; Not less than 51.3% of granite aggregate in surface layer for Jura Grey; Not less than 27.3% of granite aggregate in surface layer for Cara Slate.
<b>Surface Layer</b>	Hard-wearing surface layer with a minimum of 4mm and >390kgs/m <sup>3</sup> cement
<b>Efflorescence</b>	Minimum 12 hour vapour curing to significantly reduce the possibility of efflorescence
<b>Strength</b>	Typical tensile splitting strength of >5MPa (Class 3)
<b>Slip/Skid risk</b>	Low
<b>Installed to</b>	(Externally) BS 7533-4:2006 (Internally) Details available on request
<b>BS</b>	<b>Plus</b> Q25 315 <b>Create</b> 45-20-64/395
<b>Applications</b>	Refer to the relevant part of BS 7533 for the correct sub-base design and the most suitable product size for your application. Available from <a href="http://www.bsigroup.com">www.bsigroup.com</a>
<b>Energy used</b>	100% renewable energy
<b>Water used</b>	100% from our rainwater harvesting system and groundwater bore hole
<b>Recycled content</b>	Not less than 6%
<b>Carbon Footprint</b>	22kgCo <sup>2</sup> e/m <sup>2</sup>
<b>Recyclable</b>	100% of this product can be recycled
<b>Manufacturing &amp; Delivery</b>	From one location within the UK
<b>breem rating</b> <a href="http://www.breem.co.uk">www.breem.co.uk</a>	<b>A</b> , according to the Green Guide to Specification, 4 <sup>th</sup> Edition 2009. <b>A+</b> can be achieved by using a recycled sub-base.

Tobermore products are manufactured in accordance with an accredited ISO 9001:2015 Quality Management. Manufacturing facilities are accredited to ISO14001:2015 Environmental Management. The company publish environmental labels and declarations in accordance with BES 6001.

### Contact Us

GB: 0844 800 5736  
NI: 028 7964 2411  
ROI: 048 7964 2411

### Email

[technical@tobermore.co.uk](mailto:technical@tobermore.co.uk)  
[sales@tobermore.co.uk](mailto:sales@tobermore.co.uk)

[tobermore.co.uk](http://tobermore.co.uk)

# Braemar Flags

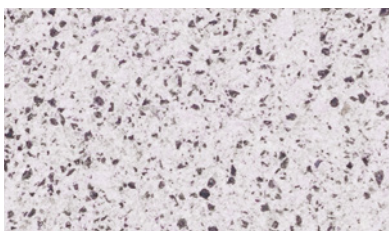


## Stock

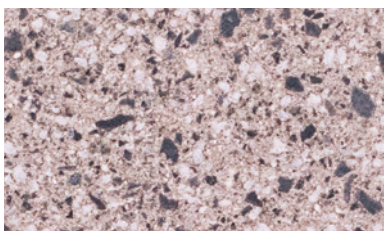
product	size (mm)	edge	colours available	in stock	m <sup>2</sup> per pack	no. per m <sup>2</sup>	no. per pack	weight kg per pack GB	weight kg per pack NI/ROI
<b>Braemar Ground &amp; Braemar Ground Textured BIM</b>	600 x 400 x 50	Chamfered	Alto Silver, Jura Grey, Cara Slate	YES	4.8	4.16	20	589	584
	450 x 450 x 50	Chamfered	Alto Silver, Jura Grey, Cara Slate	YES	4.05	4.94	20	474	470
	400 x 400 x 50	Chamfered	Alto Silver, Jura Grey, Cara Slate	YES	3.2	6.25	20	397	394

**BIM** - This product is available to download from our website in BIM Level 2 format.

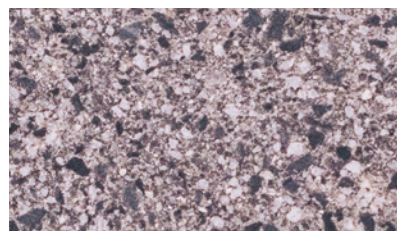
### Alto Silver



### Jura Grey



### Cara Slate



## IMPORTANT INFORMATION

A regular maintenance programme should always be established and active for all public spaces to reduce the risk of slip/skid. Tobermore's stunning ground and ground textured finishes are created using a modern diamond grinding process which achieves a premium finish. Ground textured provides a higher level of slip resistance.

Tobermore recommend that you separate product groups using contrasting bands of colour as each product is manufactured separately and may have slight variations in colour.

Light coloured flags emphasise tyre marks and oil spills. It must be accepted that these products will need more maintenance if the overall appearance is to be maintained.

### Contact Us

GB: 0844 800 5736  
NI: 028 7964 2411  
ROI: 048 7964 2411

### Email

technical@tobermore.co.uk  
sales@tobermore.co.uk

[tobermore.co.uk](http://tobermore.co.uk)