



CHRYSTON
HIGH SCHOOL
&
CULTURE
CENTRE

Paving Flags

For Commercial Projects

Pave the way...

Tobermore is proud to offer the best quality concrete paving flags available on the market. With a range of finishes, sizes and colours, there are slabs to suit every style and budget. Better yet, all Tobermore paving flags are in stock and readily available for quick dispatch. So you can focus on getting the job done.



Contents

06	
Premium Collection	
08	Braemar Flags
12	Mayfair Flags

16	
Elegance Collection	
18	Historic Flags
22	Beaufort Flags
26	Textured Flags

30	
Lifestyle Collection	
32	Riven Flags
36	Classica Flags
40	Tactile Flags

44	
Roof Terraces, Balconies & Podiums	
46	Roof Terrace Support

50	
Technical Information	
51	Laying Patterns

52	
The Tobermore Difference	
54	Environment, Social & Governance
56	PrimeTop
58	Ef-Stop
60	ServiceSure
62	Instructions & Warnings



Mayfair Flags | Silver & Graphite

01



Premium

COLLECTION

Superior paving flags offering affordable luxury

A collection of exceptional concrete paving flags with a premium natural granite appearance. Tobermore's Premium Collection offers stunning paving slabs, ready to fulfil your design aspirations. Combining attractive designs with functional performance, the Premium Collection promises to transform, modernise and add value to your scheme.



Mayfair Flags | Silver



Braemar Flags

Premium Granite Aesthetic

Braemar Flags are a premium natural stone alternative. The superior slabs are manufactured with natural aggregates that emulate the distinctive granite aesthetic. As a premium flag, Braemar adds value to projects by fulfilling design aspirations and exceeding technical requirements. Braemar's high granite content and diamond ground finish retains all the hard-wearing and long-lasting attributes of natural stone.

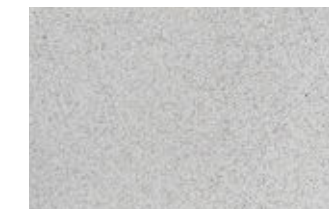
- Genuine granite aesthetic
- Diamond ground finish
- Cost-effective
- Readily available
- Low slip risk
- At least 63.3% granite aggregate in the surface layer



SCAN HERE

COLOURS

Alto Silver





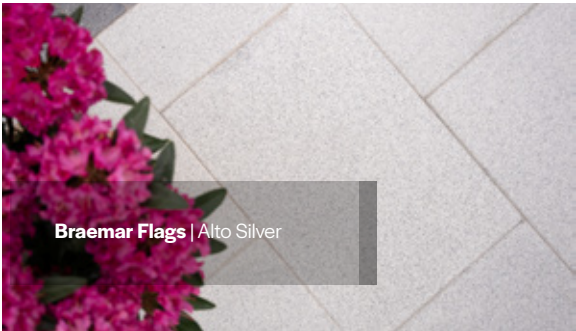
Braemar Flags



Stock

product	size (mm)	edge	colours available	in stock	m ² per pack	no. per m ²	no. per pack	weight kg per pack GB	weight kg per pack NI/ROI
Braemar Ground Flags	600 x 400 x 50	Chamfered	Alto Silver	YES	4.8	4.16	20	589	584
BIM									

BIM - This product is available to download from our website in BIM Level 2 format.



Specification

Product type	Concrete Paving Flag
Manufactured to	BS EN 1339:2003
Granite content	Not less than 63.3% of granite aggregate in surface layer
Surface Layer	Hard-wearing surface layer with a minimum of 4mm and >390kgs/m ³ cement
Efflorescence	Minimum 12 hour vapour curing to significantly reduce the possibility of efflorescence
Strength	Typical tensile splitting strength of >5MPa (Class 3)
Slip/Skid risk	Low
Installed to	(Externally) BS 7533-4:2006 (Internally) Details available on request
NS	Plus Q25 315 Create 45-20-64/395
Tolerances on Dimensions (mm)	Length ±2mm, width ±2mm, thickness ±3mm
Abrasion Resistance	Class 3
Durability (Freeze-thaw)	Class 3
External Fire Performance	Deemed to satisfy. See Commission Decision 2000/553/EC
Reaction to fire	Class A1
Applications	Refer to the relevant part of BS 7533 for the correct sub-base design and the most suitable product size for your application. Available from www.bsigroup.com
Energy used	100% renewable energy
Water used	100% from our rainwater harvesting system and groundwater bore hole
Recycled content	Not less than 6%
Carbon Footprint	31.42kgCo ² e/m ²
Recyclable	100% of this product can be recycled
Manufacturing & Delivery	From one location within the UK
breem rating	A , according to the Green Guide to Specification, 4 th Edition 2009. A+ , can be achieved by using a recycled sub-base.
www.bre.co.uk	

Tobermore products are manufactured in accordance with an accredited ISO 9001:2015 Quality Management. Manufacturing facilities are accredited to ISO14001:2015 Environmental Management. The company publish environmental labels and declarations in accordance with BES 6001.

IMPORTANT INFORMATION

A regular maintenance programme should always be established and active for all public spaces to reduce the risk of slip/skid. Tobermore's stunning ground and ground textured finishes are created using a modern diamond grinding process which achieves a premium finish. Ground textured provides a higher level of slip resistance.

PrimeTop® **Ef-Stop®**



600 x 400mm

Sizes



50mm

Depths

G
Ground
Finish

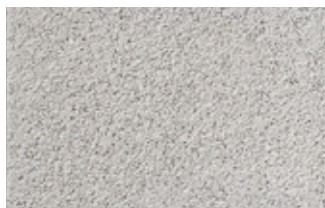
Pedestrian Use
 Light Traffic
Refer to relevant guidance in BS 7533

BIM
Level 2



COLOURS

Silver



Graphite



Sandstone



SCAN HERE

Mayfair Flags

Sparkling granite aggregates

Mayfair Flags have a sophisticated, modern feel with sparkling natural granite aggregates. The contemporary slabs come in three striking colours and four sizes. Ideal for busy pedestrianised areas, courtyards, retail developments as well as commercial and residential projects that require a high-end finish.

- Manufactured with natural granite aggregates
- Creates a striking contemporary look
- Superb hard-wearing granite surface
- 3 colours
- 4 plan sizes
- Complementary step flags available



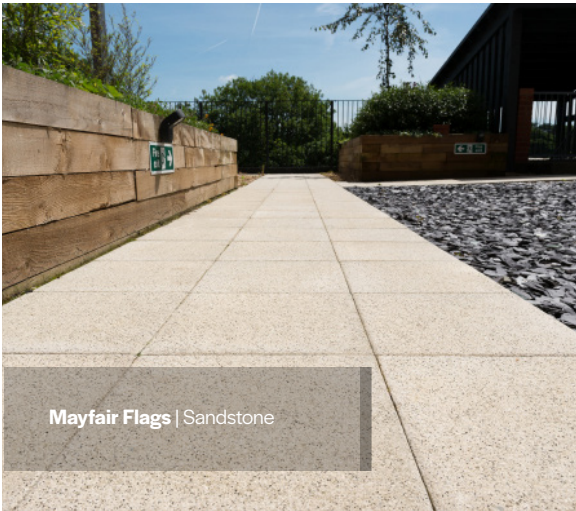
Mayfair Flags



Stock

product	size (mm)	edge	colours available	in stock	no. per m ²	no. per pack	no. per pallet	weight kg per pack GB	weight kg per pack NI/ROI
Mayfair Flags BIM	600 x 600 x 50	Chamfered	Graphite, Sandstone, Silver	YES	2.78	20	20	859	851
	600 x 400 x 50	Chamfered	Graphite, Sandstone, Silver	YES	4.16	20	40	584	580
	450 x 450 x 50	Chamfered	Graphite, Sandstone, Silver	YES	4.94	20	80	466	466
	450 x 450 x 35	Chamfered	Graphite, Sandstone, Silver	YES	4.94	30	120	529	525
	400 x 400 x 40	Chamfered	Graphite, Sandstone, Silver	YES	6.25	25	100	384	382

BIM - This product is available to download from our website in BIM Level 2 format.



Specification

Product type	Concrete Paving Flag
Manufactured to	BS EN 1339:2003
Surface Layer	Hard-wearing surface layer with a minimum of 4mm and >390kgs/m³ cement
Granite content	Not less than 57% of granite aggregate in surface layer for Silver and Graphite; Not less than 46% of granite aggregate in surface layer for Sandstone
Efflorescence	Minimum 12 hour vapour curing to significantly reduce the possibility of efflorescence
Strength	Less than 50mm deep Typical tensile splitting strength of >3.5MPa 50mm or greater Typical tensile splitting strength of >5MPa (Class 3)
Slip/Skid risk	Extremely Low
Installed to	BS 7533-4:2006
BS	Plus Q25 315 Create 45-20-64/395
Tolerances on Dimensions (mm)	Length ±2mm, width ±2mm, thickness ±3mm
Abrasion Resistance	Class 3
Durability (Freeze-thaw)	Class 3
External Fire Performance	Deemed to satisfy. See Commission Decision 2000/553/EC
Reaction to fire	Class A1
Applications	Refer to the relevant part of BS 7533 for the correct sub-base design and the most suitable product size for your application. Available from www.bsigroup.com
Energy used	100% renewable energy
Water used	100% from our rainwater harvesting system and groundwater bore hole
Recycled content	Not less than 6%
Carbon Footprint	400x400x40mm 10.43kgCo²e/m² 450x400x35mm 8.96kgCo²e/m² 450x450x50mm 12.51kgCo²e/m² 600x400x50mm 13.19kgCo²e/m² 600x600x50mm 12.54kgCo²e/m²
Recyclable	100% of this product can be recycled
Manufacturing & Delivery	From one location within the UK
breeam rating www.bre.co.uk	A , according to the Green Guide to Specification, 4 th Edition 2009. A+ , can be achieved by using a recycled sub-base.

Tobermore products are manufactured in accordance with an accredited ISO 9001:2015 Quality Management. Manufacturing facilities are accredited to ISO14001:2015 Environmental Management. The company publish environmental labels and declarations in accordance with BES 6001.

IMPORTANT INFORMATION

A regular maintenance programme should always be established and active for all public spaces to reduce the risk of slip/skid. Tobermore's stunning ground and ground textured finishes are created using a modern diamond grinding process which achieves a premium finish. Ground textured provides a higher level of slip resistance.

TGA

Textured Granite Aggregate

Finish

Steps

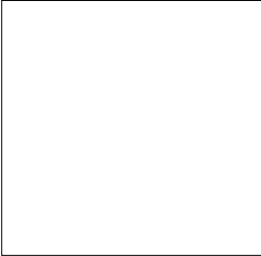
Also available as

Pedestrian Use

Light Traffic

Commercial Traffic

Refer to relevant guidance in BS 7533



600 x 600mm



600 x 400mm



450 x 450mm



400 x 400mm

Sizes



50mm
40mm
35mm

Depths

02



Elegance

COLLECTION

Stylish paving flags to complement any project

The Elegance Collection is an exclusive range of paving slabs that complement traditional and contemporary schemes. Available in a unique range of tones and textures, these concrete paving flags promise to add character to your project.



Textured Flags | Charcoal



Historic Flags

Riven stone effect

Historic Flags are a firm favourite for housebuilders and designers working on residential schemes. The natural stone aesthetic makes this product a popular choice for patios and pathways alike. Select from 3 authentic colours to add rustic charm to your housing scheme.

- 3 authentic blended colours
- Mixed sizes in pack
- Quick to install
- Matching circles available



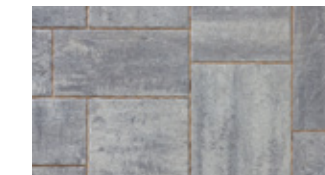
Historic Flags & Circle | Slate



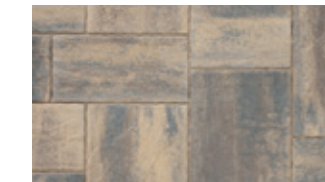
SCAN HERE

COLOURS

Slate



Bracken



Heather



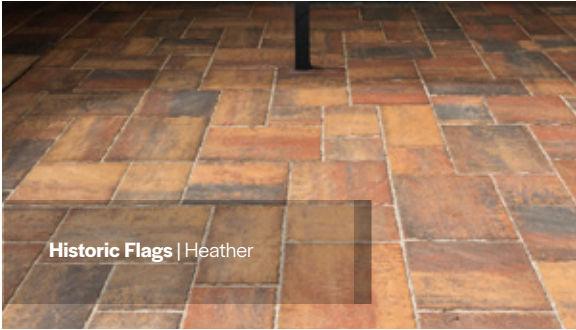


Historic Flags



Stock

product	size (mm)	edge	colours available	in stock	m² per pack	m² per slice	no. per pack	no. per pallet	weight kg per pack GB	weight kg per pack NI/ROI
Historic Flags (all sizes in one pack)	600 x 450 x 50	Fettled	Bracken, Heather, Slate	YES	14.04	1.08	13	78	1596	1596
	600 x 300 x 50						13			
	450 x 450 x 50						26			
	450 x 300 x 50						13			
	300 x 300 x 50						13			
Historic Circle	50mm x diameter	Fettled	Bracken, Heather, Slate	YES	3.94	-	25		455	455



Specification

PrimeTop® Ef-Stop®

Product type	Concrete Paving Flag
Manufactured to	BS EN 1339:2003
Surface Layer	Hard-wearing surface layer with a minimum of 4mm and >350kgs/m³ cement
Efflorescence	Minimum 12 hour vapour curing to significantly reduce the possibility of efflorescence
Strength	Typical tensile splitting strength of >5MPa (Class 3)
Slip/Skid risk	Extremely Low
Installed to	BS 7533-4:2006
BS	Plus Q25 315 Create 45-20-64/395
Tolerances on Dimensions (mm)	Length ±2mm, width ±2mm, thickness ±3mm
Abrasion Resistance	Class 3
Durability (Freeze-thaw)	Class 3
External Fire Performance	Deemed to satisfy. See Commission Decision 2000/553/EC
Reaction to fire	Class A1
Applications	Refer to the relevant part of BS 7533 for the correct sub-base design for your application. Available from www.bsigroup.com
Energy used	100% renewable energy
Water used	100% from our rainwater harvesting system and groundwater bore hole
Recycled content	Not less than 12%
Carbon Footprint	13.61kgCo²e/m²
Recyclable	100% of this product can be recycled
Manufacturing & Delivery	From one location within the UK
Breem rating	A, according to the Green Guide to Specification, 4 th Edition 2009. A+, can be achieved by using a recycled sub-base.
www.bre.co.uk	

Tobermore products are manufactured in accordance with an accredited ISO 9001:2015 Quality Management. Manufacturing facilities are accredited to ISO14001:2015 Environmental Management. The company publish environmental labels and declarations in accordance with BES 6001.

R

Riven

Finish

Pedestrian Use

Refer to relevant guidance in BS 7533

BIM Level 2

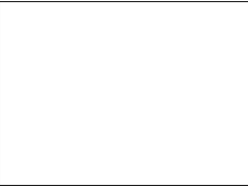
Slate



Bracken



Heather



600 x 450mm



600 x 300mm



450 x 450mm



450 x 300mm



300 x 300mm



50mm

Mixed Length Sizes
All sizes in one pack

Depths



COLOURS

Natural



Charcoal



Buff



SCAN HERE

Beaufort Flags

Natural, contoured appearance

Beaufort Flags are inspired by the timeless appeal of natural stone and offer a superb hard-wearing finish. Manufactured with a contoured, lightly embossed surface and finished with a subtle sparkle, these slabs are a popular choice for pathways and courtyards in commercial and residential developments. Available in three natural, muted colours – two classic greys and our sandstone-coloured Buff – Beaufort paving flags look stunning in both urban and rural settings.

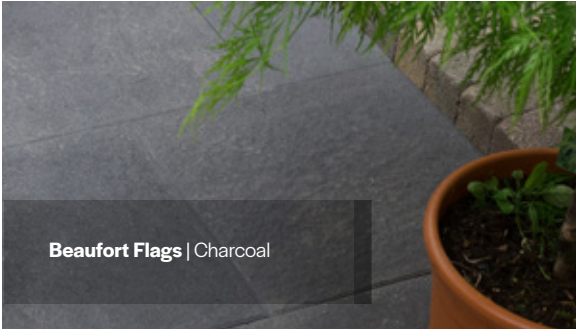
- Superb hard-wearing surface
- Contoured, lightly embossed finish
- 3 natural, muted colours
- 3 plan sizes



Beaufort Flags



Stock									
product	size (mm)	edge	colours available	in stock	no. per m ²	no. per pack	no. per pallet	weight kg per pack GB	weight kg per pack NI/ROI
Beaufort Flags	400 x 400 x 40	Chamfered	Buff, Charcoal, Natural	YES	6.25	25	100	403	400
	600 x 400 x 40	Chamfered	Charcoal, Natural	YES	4.16	25	100	569	560
	450 x 450 x 35	Chamfered	Charcoal, Natural	YES	4.94	30	120	515	511



Specification

PrimeTop® Ef-Stop®

Product type	Concrete Paving Flag
Manufactured to	BS EN 1339:2003
Granite Content	Not less than 60% of granite aggregate in surface layer for Charcoal; Not less than 73% of granite aggregate in surface layer for Natural; Not less than 44% of granite aggregate in surface layer for Buff.
Surface Layer	Hard-wearing surface layer with a minimum of 4mm and >390kgs/m ³ cement
Efflorescence	Minimum 12 hour vapour curing to significantly reduce the possibility of efflorescence
Strength	Typical tensile strength of > 3.5MPa
Slip/Skid risk	Extremely Low
Installed to	BS 7533-4:2006
ΠΣΣ	Plus Q25 315 Create 45-20-64/395
Tolerances on Dimensions (mm)	Length ±2mm, width ±2mm, thickness ±3mm
Abrasion Resistance	Class 3
Durability (Freeze-thaw)	Class 3
External Fire Performance	Deemed to satisfy. See Commission Decision 2000/553/EC
Reaction to fire	Class A1
Applications	Refer to the relevant part of BS 7533 for the correct sub-base design and the most suitable product size for your application. Available from www.bsigroup.com
Energy used	100% renewable energy
Water used	100% from our rainwater harvesting system and groundwater bore hole
Recycled content	Not less than 5%
Carbon Footprint	10.27kgCo ² e/m ²
Recyclable	100% of this product can be recycled
Manufacturing & Delivery	From one location within the UK
brecom rating	A, according to the Green Guide to Specification, 4 th Edition 2009. A+, can be achieved by using a recycled sub-base.

Tobermore products are manufactured in accordance with an accredited ISO 9001:2015 Quality Management. Manufacturing facilities are accredited to ISO14001:2015 Environmental Management. The company publish environmental labels and declarations in accordance with BES 6001.

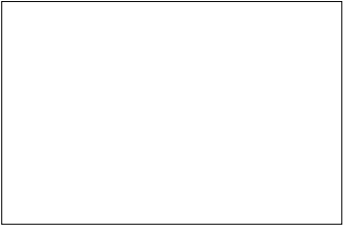


Finish

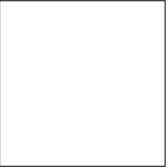


Pedestrian Use

Refer to relevant guidance in BS 7533



600 x 400mm



450 x 450mm



400 x 400mm

Sizes



40mm

35mm

Depths



Textured Flags

Hard-wearing, granular surface

Textured Flags have a modern and natural look that blends beautifully with a variety of projects. Manufactured with a hard-wearing granular surface, these flags offer a stylish finish and come in four long-lasting colours.

- Granular hard-wearing surface
- 4 subtle colours
- 3 plan sizes
- Permeable option available



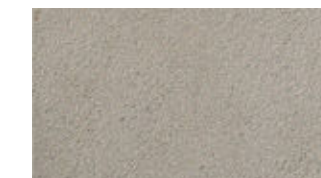
Textured Flags | Buff



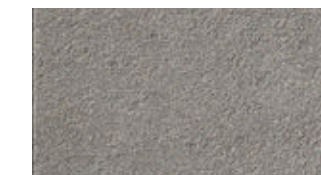
SCAN HERE

COLOURS

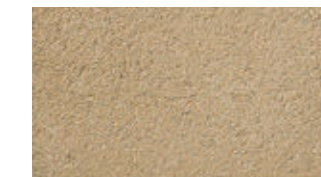
Natural



Charcoal



Buff



Golden





Textured Flags

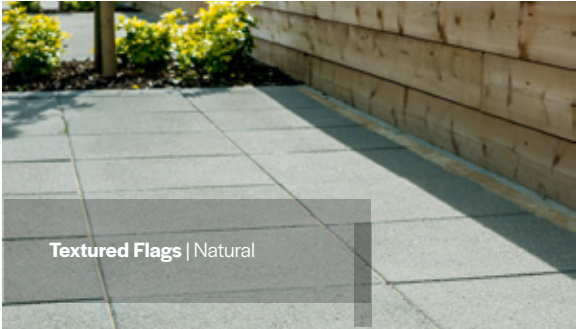


Textured Flags | Charcoal

Stock

product	size (mm)	edge	colours available	in stock	no. per m²	no. per pack	no. per pallet	weight kg per pack GB	weight kg per pack NI/ROI
Textured Flags BIM	600 x 600 x 50	Chamfered	Buff, Charcoal, Natural	YES	2.78	20	20	850	842
	600 x 600 x 40	Chamfered	Buff, Charcoal, Natural	YES	2.78	24	24	848	840
	600 x 400 x 40	Chamfered	Charcoal, Natural	YES	4.16	25	50	569	560
	450 x 450 x 50	Chamfered	Buff, Charcoal, Natural	YES	4.94	20	80	1490	1480
	450 x 450 x 35	Chamfered	Buff, Charcoal, Natural	YES	4.94	30	120	521	517
	400 x 400 x 40	Chamfered	Charcoal, Golden, Natural	YES	6.25	25	100	403	400
	400 x 400 x 32	Chamfered	Charcoal, Golden, Natural	YES	6.25	30	120	387	385

BIM - This product is available to download from our website in BIM Level 2 format.



Textured Flags | Natural

Specification

PrimeTop® Ef-Stop®

Product type	Concrete Paving Flag
Manufactured to	BS EN 1339:2003
Surface Layer	Hard-wearing surface layer with a minimum of 4mm and >390kgs/m³ cement
Efflorescence	Minimum 12 hour vapour curing to significantly reduce the possibility of efflorescence
Strength	Less than 50mm deep Typical tensile splitting strength of >3.5MPa 50mm or greater Typical tensile splitting strength of >5MPa (Class 3)
Slip/Skid risk	Extremely Low
Installed to	BS 7533-4:2006
ΠΣ5	Plus Q25 315 Create 45-20-64/395
Tolerances on Dimensions (mm)	Length ±2mm, width ±2mm, thickness ±3mm
Abrasion Resistance	Class 3
Durability (Freeze-thaw)	Class 3
External Fire Performance	Deemed to satisfy See Commission Decision 2000/553/EC
Reaction to fire	Class A1
Applications	Refer to the relevant part of BS 7533 for the correct sub-base design and the most suitable product size for your application. Available from www.bsigroup.com
Energy used	100% renewable energy
Water used	100% from our rainwater harvesting system and groundwater bore hole
Recycled content	Not less than 5%
Carbon Footprint	400x400x32mm 8.09kgCo²e/m² 400x400x40mm 9.06kgCo²e/m² 450x450x35mm 8.72kgCo²e/m² 450x450x50mm 12.08kgCo²e/m² 600x600x40mm 9.96kgCo²e/m² 600x600x50mm 12.09kgCo²e/m²
Recyclable	100% of this product can be recycled
Manufacturing & Delivery	From one location within the UK
rating www.bre.co.uk	A , according to the Green Guide to Specification, 4 th Edition 2009. A+ , can be achieved by using a recycled sub-base.

Tobermore products are manufactured in accordance with an accredited ISO 9001:2015 Quality Management. Manufacturing facilities are accredited to ISO14001:2015 Environmental Management. The company publish environmental labels and declarations in accordance with BES 6001.

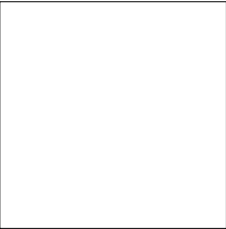
IMPORTANT INFORMATION

A regular maintenance programme should always be established and active for all public spaces to reduce the risk of slip/skid. Tobermore's stunning ground and ground textured finishes are created using a modern diamond grinding process which achieves a premium finish. Ground textured provides a higher level of slip resistance.

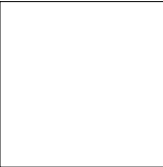
T
Textured
Finish

Permeable
Also available as

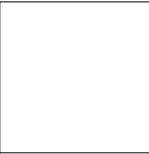
Pedestrian Use
 Light Traffic
 Commercial Traffic
 BIM Level 2
Refer to relevant guidance in BS 7533



600 x 600mm



450 x 450mm



400 x 400mm

Sizes



32mm

35mm

40mm

50mm

Depths

03



Lifestyle

COLLECTION

Cost-effective, quality paving flags

The Lifestyle Collection offers a versatile range of paving slabs which are manufactured for everyday living. The quality paving flags come in popular colours which are sure to complement any application. Boasting a hard-wearing surface, the Lifestyle Collection offers quality concrete paving slabs at an affordable price.





Riven Flags

Natural, rustic look

Riven Flags are manufactured with a natural stonelike finish. The slabs give an authentic look to traditional projects with their rugged feel. Riven Flags come in four colours and three sizes and are sure to add rustic charm to your project.

- Resembles the rugged appearance of natural stone
- Superb hard-wearing riven surface
- 4 long-lasting colours
- 3 plan sizes



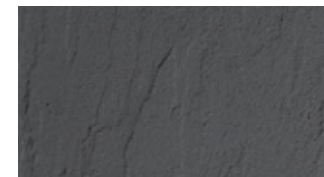
SCAN HERE

COLOURS

Natural



Charcoal



Buff



Golden



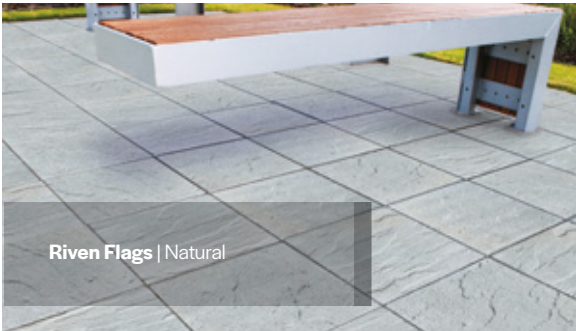


Riven Flags



Stock

product	size (mm)	edge	colours available	in stock	no. per m²	no. per pack	no. per pallet	weight kg per pack GB	weight kg per pack NI/ROI
Riven Flags	600 x 600 x 40	Chamfered	Buff, Charcoal, Natural	YES	2.78	24	24	840	848
	450 x 450 x 35	Chamfered	Buff, Charcoal, Natural	YES	4.94	30	120	532	528
	400 x 400 x 32	Chamfered	Charcoal, Golden, Natural	YES	6.25	30	120	400	398

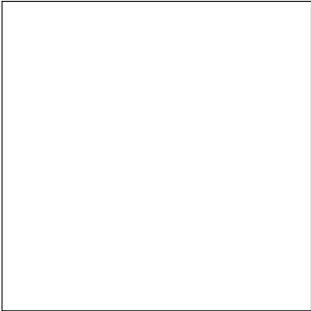


Specification

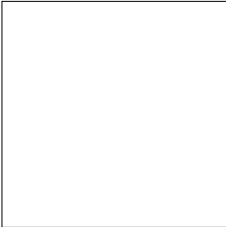
✔ PrimeTop® ✔ Ef-Stop®

Product type	Concrete Paving Flag
Manufactured to	BS EN 1339:2003
Surface Layer	Hard-wearing surface layer with a minimum of 4mm and >390kgs/m³ cement
Efflorescence	Minimum 12 hour vapour curing to significantly reduce the possibility of efflorescence
Strength	Typical tensile strength of > 3.5MPa
Slip/Skid risk	Extremely Low
Installed to	BS 7533-4:2006
ONS	Plus Q25 315 Create 45-20-64/395
Tolerances on Dimensions (mm)	Length ±2mm, width ±2mm, thickness ±3mm
Abrasion Resistance	Class 3
Durability (Freeze-thaw)	Class 3
External Fire Performance	Deemed to satisfy. See Commission Decision 2000/553/EC
Reaction to fire	Class A1
Applications	Refer to the relevant part of BS 7533 for the correct sub-base design and the most suitable product size for your application. Available from www.bsigroup.com
Energy used	100% renewable energy
Water used	100% from our rainwater harvesting system and groundwater bore hole
Recycled content	Not less than 5%
Carbon Footprint	400x400x32mm 7.88kgCo²e/m² 450x450x35mm 8.86kgCo²e/m² 600x600x40mm 9.80kgCo²e/m²
Recyclable	100% of this product can be recycled
Manufacturing & Delivery	From one location within the UK
breeam rating www.bre.co.uk	A , according to the Green Guide to Specification, 4 th Edition 2009. A+ , can be achieved by using a recycled sub-base.

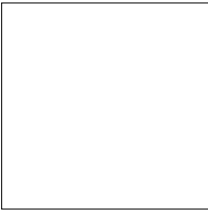
Tobermore products are manufactured in accordance with an accredited ISO 9001:2015 Quality Management. Manufacturing facilities are accredited to ISO14001:2015 Environmental Management. The company publish environmental labels and declarations in accordance with BES 6001.



600 x 600mm



450 x 450mm



400 x 400mm

Sizes



32mm
35mm
40mm

Depths

R

Riven

Finish

Pedestrian Use

Refer to relevant guidance in BS 7533

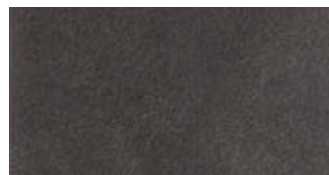


COLOURS

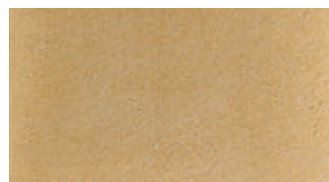
Natural



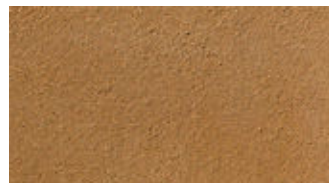
Charcoal



Buff



Golden



Classica Flags | Charcoal



SCAN HERE

Classica Flags

Cost-effective and stylish

Classica Flags have a stylish, simple look that suits contemporary and traditional schemes. These cost-effective quality paving slabs are a popular choice for many professionals. Available in four colours and three sizes, you are guaranteed to find a Classica Flag to complement your project.

- Cost-effective quality slab
- Superb hard-wearing surface
- Permeable option available
- 4 long-lasting colours
- 3 plan sizes



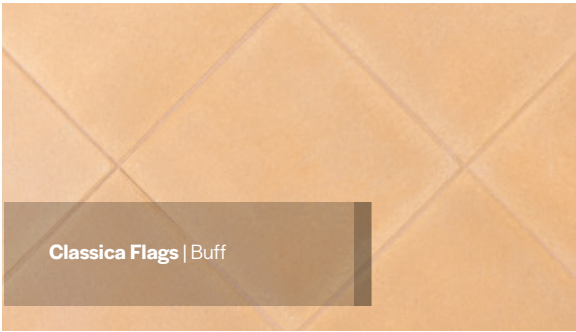
Classica Flags



Stock

product	size (mm)	edge	colours available	in stock	no. per m²	no. per pack	no. per pallet	weight kg per pack GB	weight kg per pack NI/ROI
Classica Flags BIM	600 x 600 x 50	Chamfered	Charcoal, Natural	YES	2.78	20	20	850	841
	600 x 600 x 40	Chamfered	Buff, Charcoal, Natural	YES	2.78	24	24	833	840
	600 x 400 x 40	Chamfered	Charcoal, Natural	YES	4.16	25	50	569	560
	450 x 450 x 50	Chamfered	Buff, Charcoal, Natural	YES	4.94	20	80	1404	1480
	450 x 450 x 35	Chamfered	Buff, Charcoal, Natural	YES	4.94	30	120	517	511
	400 x 400 x 40	Chamfered	Charcoal, Golden, Natural	YES	6.25	25	100	400	400
	400 x 400 x 32	Chamfered	Charcoal, Golden, Natural	YES	6.25	30	120	394	392

BIM - This product is available to download from our website in BIM Level 2 format.



Specification

PrimeTop® **Ef-Stop®**

Product type	Concrete Paving Flag
Manufactured to	BS EN 1339:2003
Surface Layer	Hard-wearing surface layer with a minimum of 4mm and >390kgs/m³ cement
Efflorescence	Minimum 12 hour vapour curing to significantly reduce the possibility of efflorescence
Strength	Less than 50mm deep Typical tensile splitting strength of >3.5MPa 50mm or greater Typical tensile splitting strength of >5MPa (Class 3)
Slip/Skid risk	Extremely Low
Installed to	BS 7533-4:2006
ONS	Plus Q25 315 Create 45-20-64/395
Tolerances on Dimensions (mm)	Length ±2mm, width ±2mm, thickness ±3mm
Abrasion Resistance	Class 3
Durability (Freeze-thaw)	Class 3
External Fire Performance	Deemed to satisfy. See Commission Decision 2000/553/EC
Reaction to fire	Class A1
Applications	Refer to the relevant part of BS 7533 for the correct sub-base design and the most suitable product size for your application. Available from www.bsigroup.com
Energy used	100% renewable energy
Water used	100% from our rainwater harvesting system and groundwater bore hole
Recycled content	Not less than 5%
Carbon Footprint	400x400x32mm 7.88kgCo²e/m² 400x400x40mm 9.63kgCo²e/m² 450x450x35mm 8.76kgCo²e/m² 450x450x50mm 11.87kgCo²e/m² 600x600x40mm 9.80kgCo²e/m² 600x600x50mm 12.46kgCo²e/m²
Recyclable	100% of this product can be recycled
Manufacturing & Delivery	From one location within the UK
breeam rating www.bre.co.uk	A , according to the Green Guide to Specification, 4 th Edition 2009. A+ , can be achieved by using a recycled sub-base.

Tobermore products are manufactured in accordance with an accredited ISO 9001:2015 Quality Management. Manufacturing facilities are accredited to ISO14001:2015 Environmental Management. The company publish environmental labels and declarations in accordance with BES 6001.

Smooth

Permeable

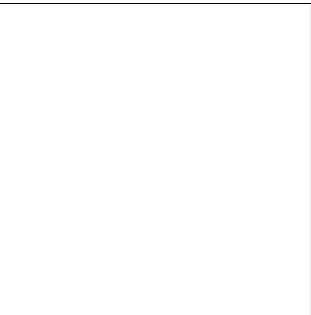
Pedestrian Use

Light Traffic

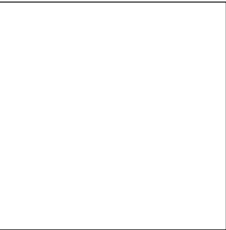
Commercial Traffic

BIM Level 2

FinishAlso available asRefer to relevant guidance in BS 7533



600 x 600mm



450 x 450mm



400 x 400mm

Sizes



- 32mm
- 35mm
- 40mm
- 50mm

Depths



Tactile Flags

Aids the visually impaired & blind

Tobermore's range of Tactile Flags are designed to assist pedestrians who are visually impaired or blind. Tactile paving makes it easier for those with visual impairments to identify road crossing areas and drop kerbs. Red relates to controlled crossing zones while Buff is available to distinguish uncontrolled crossing zones.

- Raised blister surface can be felt underfoot
- Delivers an extra safety measure at crossing points and drop kerb areas
- Superb hard-wearing surface



Tactile Flags | Blister Buff



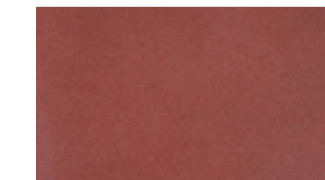
SCAN HERE

COLOURS

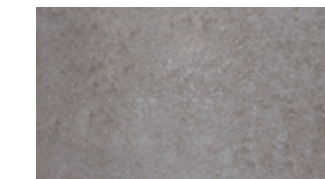
Buff



Red



Natural





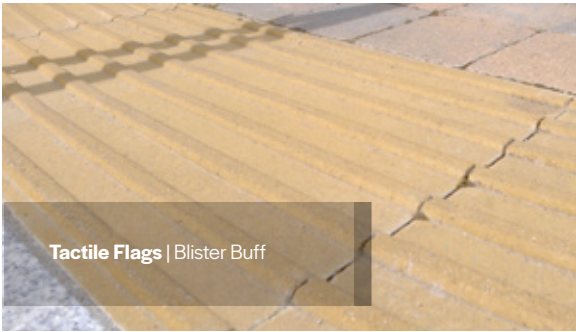
Tactile Flags



Tactile Flags | Hazard Warning Natural

Stock

product	size (mm)	finish	edge	colours available	in stock	no. per m ²	no. per pack	no. per pallet	weight kg per pack GB	weight kg per pack NI/ROI
Tactile Flags	400 x 400 x 50	Blister	Square	Buff, Red and Natural	YES	6.25	20	80	393	391
	400 x 400 x 50	Hazard Warning	Square	Buff, Natural	YES	6.25	20	80	416	414
	400 x 400 x 50	Cycleway	Square	Buff, Natural	YES	6.25	20	80	416	414



Tactile Flags | Blister Buff

Specification



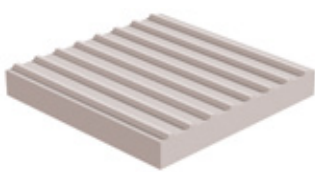
Product type	Concrete Paving Flag
Manufactured to	BS EN 1339:2003
Surface Layer	Hard-wearing surface layer with a minimum of 4mm and >390kgs/m³ cement
Efflorescence	Minimum 12 hour vapour curing to significantly reduce the possibility of efflorescence
Strength	Typical tensile splitting strength of >5MPa (Class 3)
Slip/Skid risk	Mean polished skid resistance value PSRV >45 Mean unpolished skid resistance value USRV >45
Installed to	BS 7533-4:2006
Sizes	Plus Q25 320 Create 45-20-64/425
Abrasion Resistance	Class 3
Durability (Freeze-thaw)	Class 3
External Fire Performance	Deemed to satisfy See Commission Decision 2000/553/EC
Reaction to fire	Class A1
Applications	Refer to the relevant part of BS 7533 for the correct sub-base design for your application. Available from www.bsigroup.co
Energy used	100% renewable energy
Water used	100% from our rainwater harvesting system and groundwater bore hole
Recycled content	Not less than 5%
Carbon Footprint	13.93kgCo²e/m²
Recyclable	100% of this product can be recycled
Manufacturing & Delivery	From one location within the UK
rating www.bre.co.uk	A , according to the Green Guide to Specification, 4 th Edition 2009. A+ , can be achieved by using a recycled sub-base.
Tobermore products are manufactured in accordance with an accredited ISO 9001:2015 Quality Management. Manufacturing facilities are accredited to ISO14001:2015 Environmental Management. The company publish environmental labels and declarations in accordance with BES 6001.	



Blister

Blister flags enable the partially sighted and blind to distinguish between different types of crossing zones.

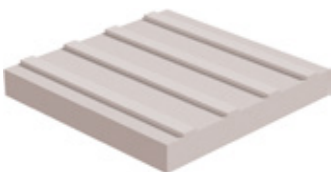
Red relates to controlled crossing zones while Buff is available to distinguish uncontrolled crossing zones.



Hazard Warning

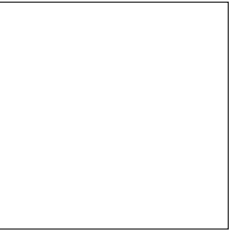
Blister flags enable the partially sighted and blind to distinguish between different types of crossing zones.

Red relates to controlled crossing zones while Buff is available to distinguish uncontrolled crossing zones.



Cycleway Warning

For installation on a track/footway where there is no physical barrier or level difference between the pedestrian and cyclist



400 x 400mm

Sizes



50mm

Depths

B Blister	HW Hazard Warning	C Cycleway
---------------------	-----------------------------	----------------------

Finish



Refer to relevant guidance in BS 7533

Roof Terraces, Balconies & Podiums



Roof Terraces, Balconies & Podiums

Outdoor living has never been so desirable. The scarcity of outside space has given way to an increase in roof terraces, balconies and podiums.

Roof terraces provide much sought-after additional space to relax or entertain. Roof gardens offer residents valuable communal areas that can champion a community ethos. Developers can increase the value of their homes by adding desirable outside space.

Tobermore offers many beautiful paving products that are suitable for roof terraces, roof gardens, balconies, and podium decks.

WHY USE TOBERMORE FLAGS ON A BALCONIES AND ROOF TERRACES?

- ✓ Laying flags on pedestals is efficient and cost-effective
- ✓ Very little equipment or materials required
- ✓ No aggregates or sand need to be lifted onto the roof
- ✓ Clean install with no mortar or sand
- ✓ Flags can be lifted to access the roof or work at services
- ✓ Easy to maintain
- ✓ Easily replaced if needed

WHAT PRODUCTS ARE SUITABLE FOR ROOF TERRACES AND BALCONIES?

product	size (mm)
Braemar Flags	600 x 400 x 50
	400 x 400 x 40
Mayfair Flags	450 x 450 x 50
	600 x 400 x 50
	600 x 600 x 50
Beaufort Flags	400 x 400 x 40
	600 x 400 x 50
Textured Flags	400 x 400 x 40
	600 x 600 x 40
	450 x 450 x 50
Riven Flags	600 x 600 x 50
	600 x 600 x 40
Classica Flags	400 x 400 x 40
	600 x 600 x 40
	450 x 450 x 50
	600 x 600 x 50



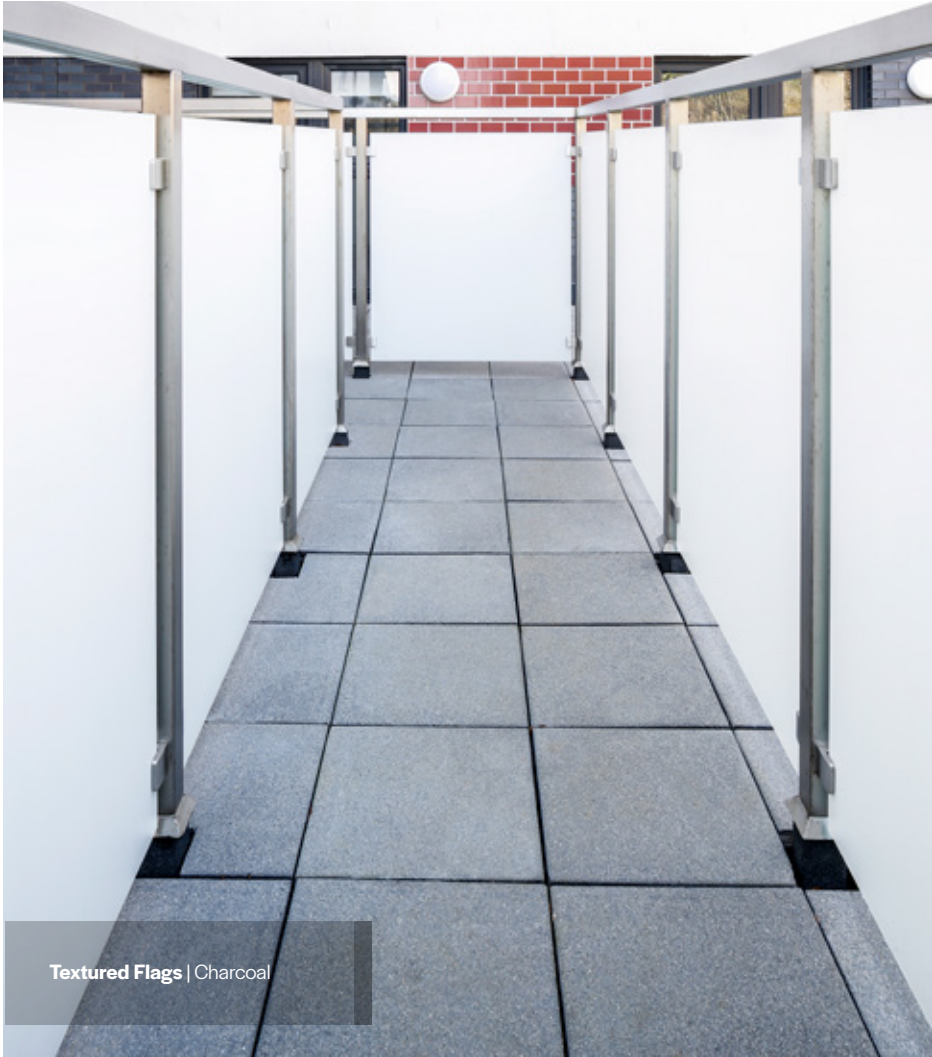
Textured Flags | Charcoal



Roof Terrace Support

Whether you have a question related to logistics of lifting and wrapping products or are seeking guidance on pedestal positioning for slab support, Tobermore's Technical team is on hand to answer any queries you have. Please email **technical@tobermore.co.uk** and one of our technical team will be in touch to answer your enquiry in more detail.

- We can advise on:
- Product suitability
 - Product strength
 - Product loading tolerances
 - Compatible pedestals
 - Pedestal placement
 - Installation methods





Technical Information

IMPORTANT INFORMATION

Any technical information provided by Tobermore in relation to any product (whether before or after order) is provided by way of GUIDANCE ONLY and, to the fullest extent permitted by law, without liability on the part of Tobermore for any loss or damage suffered as a result of relying upon it. Such technical information should not be relied upon in substitution for obtaining independent expert advice prior to using any product from both a suitably qualified engineer and building contractor, in particular, as to the suitability of the product for use at the intended site for the intended scheme.

Paving Flags are now an established product in the construction industry and have a number of British Standards (BS) dedicated to the range to ensure they are professionally designed and installed. Refer to the following relevant BS guidelines for detailed information.

Note: BS guidelines are subject to change and therefore you should refer to www.bsigroup.com for the latest version.

IMPORTANT NOTES

Edge restraint

All paved areas require an edge restraint to prevent lateral movement of the paved area and to restrict the loss of laying course material. Edge restraints can be existing structures, kerbs, channels or standard paving blocks bedded onto and haunched with concrete.

Paving flag Support Pads

Tobermore can provide fixed height plastic paving support pads to enable flags to be installed on roof terraces and balconies. Contact Tobermore for details.

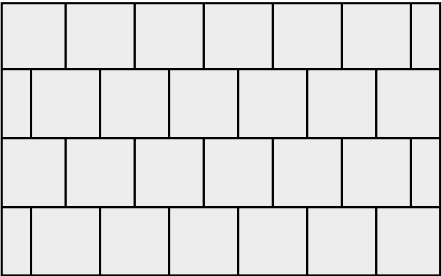
BS 7533-4:2006	Pavements constructed with clay, natural stone or concrete pavers. Code of practice for the construction of pavements of precast concrete flags or natural stone slabs.
BS 7533-8:2003	Pavements constructed with clay, natural stone, or concrete pavers. Guide for the structural design of lightly trafficked pavements of precast concrete flags and natural stone flags.
BS 7533-11:2003	Code of practice for the opening, maintenance and reinstatement of pavements of concrete, clay and natural stone.
BS 7533-12:2006	Pavements constructed with clay, natural stone or concrete pavers. Guide to the structural design of trafficked pavements constructed on a bound base using concrete paving flags and natural stone slabs.

Vibrant long-lasting colours

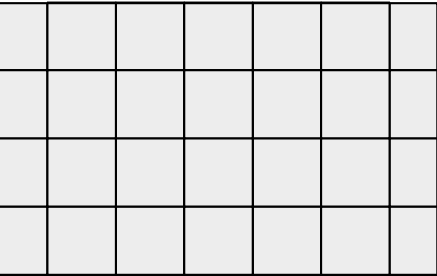
Tobermore only use high quality Iron Oxide pigments, (which are made to BS EN 12878), to produce our strong, vibrant and deep colours. Our state-of-the-art equipment makes our products extremely dense thus ensuring that our colours remain intact for very long periods. For example when we examine products which are 10 years old we can see that the colour retention is excellent. Tobermore would recommend that to maintain the colour and quality of product a regular maintenance programme is carried out on all projects.

Laying Patterns

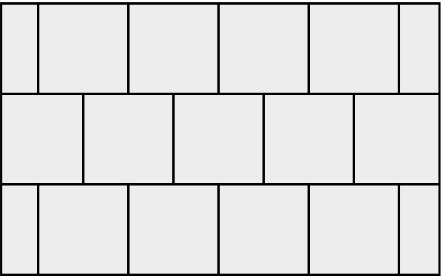
PAVING FLAGS



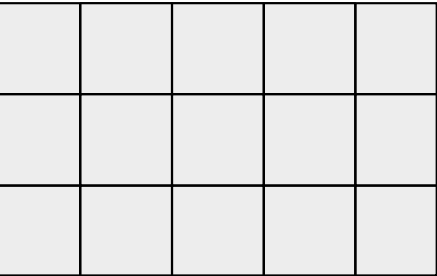
Stretcher bond
400 x 400mm



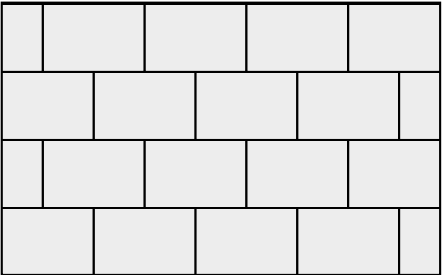
Stack bond
400 x 400mm



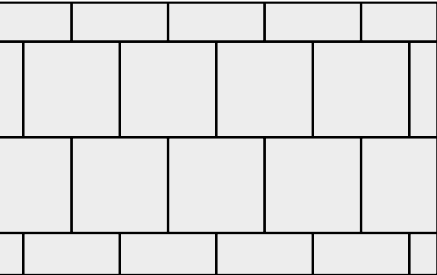
Stretcher bond
450 x 450mm



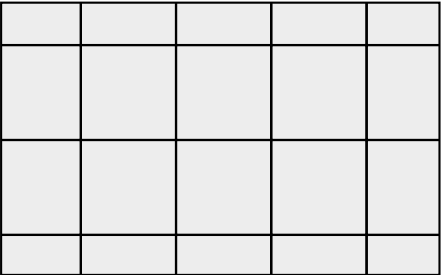
Stack bond
450 x 450mm



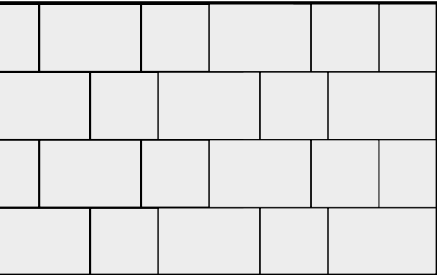
Stretcher bond
600 x 400mm



Stretcher bond
600 x 600mm



Stack bond
600 x 600mm



Stretcher bond
600 x 400mm & 400 x 400mm

Trust Tobermore

A Proud History

TOBERMORE
SAND & GRAVEL Co.

80 Years & counting

Behind every remarkable company lies a story of vision and exceptional determination.

At Tobermore our inspirational story began over 75 years ago when Sam Henderson returned from the war as a young man. His mother had saved £500 during his time away and this was quickly invested in a fledgling family business. Sam went on to lead the business into pioneering production of concrete products before subsequent developments laid the foundations for the Tobermore brand.

Today, Tobermore remains family owned and managed, with the same vision, determination and values which are driving the business forward as one of the UK and Ireland's leading manufacturers of concrete paving and walling products. We

are now trusted suppliers to some of the country's most prestigious schemes in partnership with leading contractors and housebuilders.

At Tobermore "average" is never acceptable. Our recent £17 million investment in two new production plants and the world's most advanced manufacturing equipment is indicative of our determination to always serve our chosen markets with excellent quality and service.

In 2019 we launched a fresh new face for Tobermore reflecting the energy and spirit which drives our people to bring market-beating solutions to designers and contractors across the country. Innovation fuels our growth as we find new ways to further enhance product performance, making us enthusiastic about Tobermore's future in a market which recognises the true value of our 'right first time', responsive service.



“Our continual investment in people and new technology is securing Tobermore's excellence for both quality and service.”

David Henderson
Managing Director



Environment, Social & Governance

Tobermore is committed to creating a more sustainable future guided by our Environmental, Social and Governance (ESG) commitments. We have developed a dedicated sustainability committee that meet regularly to drive continuous improvement.



Energy
We are reducing our carbon footprint by hundreds of tonnes each year by investing in the production of our own clean energy output from solar panels and a 250kw wind turbine.



Waste
We have reduced our waste to landfill to zero through a process of continual improvement in production efficiency and the 100% recycling of manufacturing residue.



Transport
We maximise transport efficiency, through our “on time and in full” policy. All loads are despatched from a single site and vehicle use is optimised through back loading.



Charitable Giving
We proudly support a large number of charities including World Vision. £4.8million has been donated to worthy causes in the last 10 years.



Scan to read our EPDs



Water
We recycle 100% of the water used in our manufacturing process and manage our use of this precious resource by investing in systems to harvest rainwater.



Recycled Packaging
Our 100% recyclable polyethylene packaging contains 30% recycled material. By using recycled material, we have decreased waste and reduced our packaging-related carbon footprint by 20%.



Environmental Product Declarations (EPDs)
Tobermore’s verified EPDs demonstrate the environmental impact of our paving, walling and kerb products over time.



Local Community
Tobermore are the largest employer in the local village for over 70 years and we actively support local organisations, schools and churches.



PrimeTop is the high performance feature which differentiates Tobermore from standard concrete paving.
Tobermore's PrimeTop is manufactured with a premium, hard-wearing surface layer which adds significant performance benefits.

PrimeTop Layer

Hard-wearing Surface

The PrimeTop surface layer has a dense composition of finer aggregates, hard sand and a higher percentage of cement. This hardened surface layer has enhanced strength and increased resistance to wear and tear, for both pedestrian and vehicular traffic.

Aesthetic appeal & enhanced weathering

The PrimeTop surface layer contains a high concentration of pigment creating vibrant colour and exceptional UV performance, leading to enhanced weathering properties. Tobemore PrimeTop is renowned for its superior long-term retention of colour and visual appeal.

We produce two different material mixes; the PrimeTop layer and a robust base layer formulated for optimum structural performance. Both layers are formed simultaneously, producing an inseparable bond that stands the test of time.



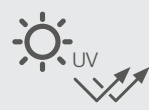
Excellent wear
resistance



Refined over
25 years




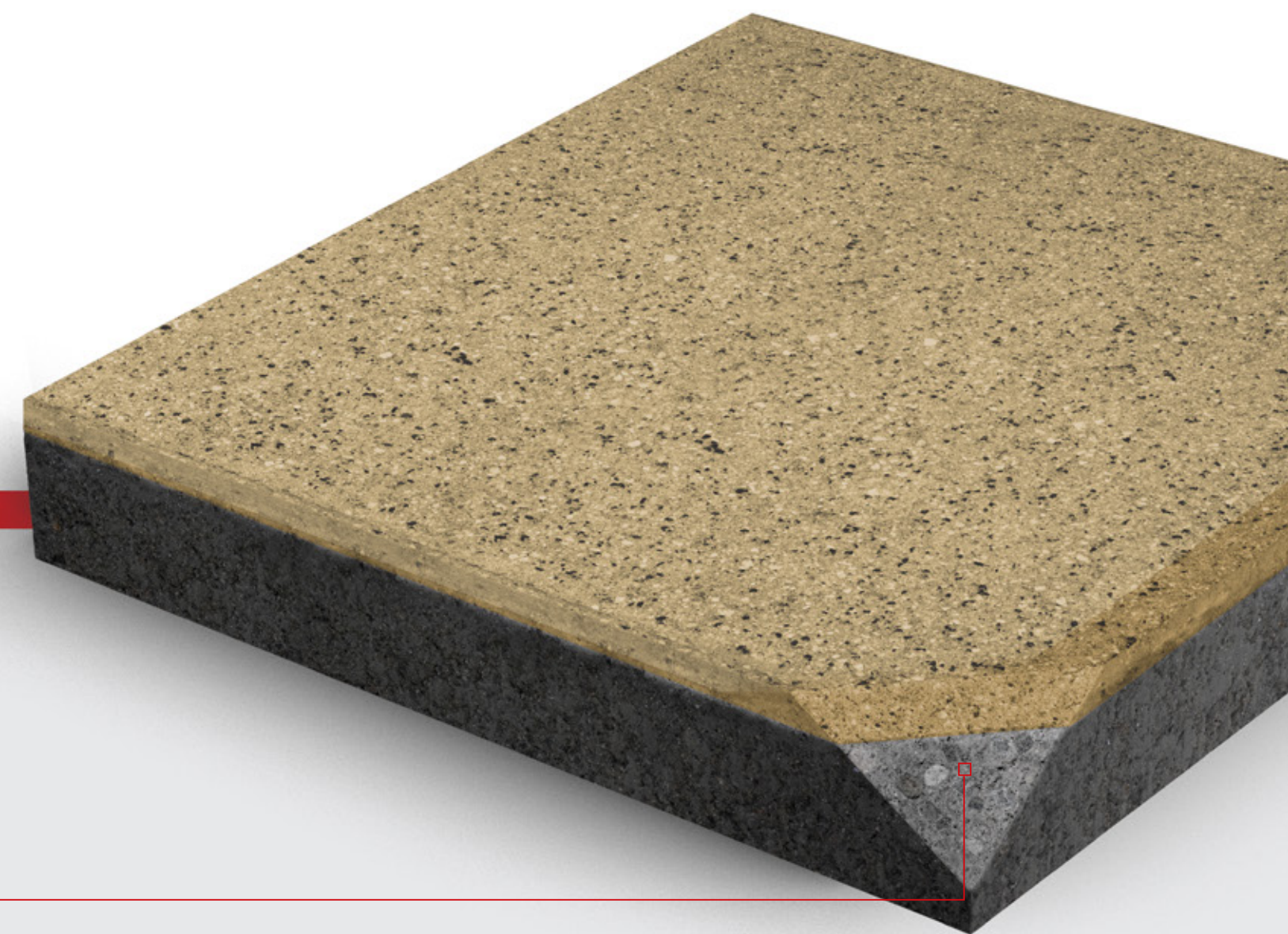
Superior frost
resistance



Long lasting
colour



 **PrimeTop**
Look for products with the PrimeTop logo



✓ **More**
Cement

✓ **More**
Pigment

✓ **Finer**
Aggregates



Combatting efflorescence

Every aspect of our product's performance is researched and optimised to provide an excellent long-lasting appearance. In respect to the challenge of efflorescence, we have invested in manufacturing technology which enables us to produce virtually efflorescence free paving.

Efflorescence is perhaps the single biggest problem encountered with decorative concrete paving products. The cause of efflorescence is simply a chemical reaction between the cement in the concrete and rainwater causing the formation of calcium carbonate. This white, crystalline substance stains the surface and spoils the appearance of the paving.



 **Ef-Stop**
Look for products with the Ef-Stop logo

In the Tobermore manufacturing process, we cure our products in a warm vapour atmosphere for 12 hours, which ensures that efflorescence is dramatically reduced. Moreover, the vapour curing also enhances the colour, improves the strength and cures the products much faster, allowing products to be used almost immediately.



Competitor's paving



Vapour Cured
The Ef-Stop protection includes an intense vapour curing process. Vapour penetrates to the core of the paver.

ServiceSure

ServiceSure is Tobermore's unique package of customer service benefits developed to ensure an efficient, consistent and streamlined experience. This unbeatable, seamless service follows your project from initial enquiry to delivery and beyond, keeping you fully informed at every stage.

Delivery excellence

You can trust Tobermore to fulfil your order on time and in full as agreed. This industry leading service is proven week in week out and in 2018 we achieved outstanding delivery performance with 99.4% of orders on time and in full.

99.4%
ON TIME IN FULL

Easy Spec

Our specification team is on hand across the UK and Ireland to support you with technical advice, design support and samples. Tobermore's comprehensive website provides additional access to useful information. This is backed up by a package of the industry's leading specification tools including NBS Source and BIM level 2.

nbs

NBS
Plus & Create



BIM
Level 2



Design
Services

Fast Quote

We always turn around quotes within one working day.



Unrivalled availability

With more stock on the ground and a faster turnaround on batch controlled orders we offer market leading availability on a full range of paving and walling products. As we manufacture everything on one site we can combine mixed product loads for customer friendly logistics.

Intelligent Ordering

Every order placed with Tobermore is sense checked on receipt by one of our trusted advisors who will liaise with you directly to ensure quantity, format and delivery details are right first time. All orders will receive an Order Confirmation with clear product and pricing information.

Instructions & Warnings

CORE TERMS (PAVING & WALLING)

Product

All products should be carefully inspected for defects or damage upon delivery and prior to being laid or fitted.

Product Information

Within Tobermore, design and development of products is a continuing process, and product information is subject to change without notice. Accordingly, please check with Tobermore to ensure that the product information you have represents the most up-to-date product information.

Prior to Installation

Prior to opening the packs check that all the batch code labels match. The batch code labels can be found on the outer packaging. For example, O4D22N. It is good practice to sort products to ensure consistency of colour, texture and dimensional tolerance. Any defects must be reported without delay. If products are installed with any form of defect which was clearly apparent prior to installation the installer will be responsible for all costs incurred to rectify the issue.

Installation

All products should be installed in accordance with the latest British Standard.

Colour/Shade & Texture

Tobermore produces paving and walling products with excellent density and durability. All products are manufactured in batches using naturally extracted raw materials including aggregates, pigments and cement etc. Products such Braemar, Sienna, Fusion, Mayfair Flags, Manhattan, City Pave and Fusion Kerbs are manufactured using premium naturally occurring granite aggregates. To achieve their final appearance some products undergo secondary processes, this involves shot blasting or grinding the surface of the product.

Whilst we have several factory procedures in place to help control shade, colour and texture within and between batches we cannot guarantee consistency. This is due to the natural materials and secondary processes. Therefore, slight variations in the finished products is normal between and within batches. These variations actually enhance the character and natural beauty of the products.

To achieve the best possible finish we recommend the following advice is followed to evenly distribute any slight variations in shade, colour and texture over a large area.

When the circumstances allow complete one area of paving, one retaining wall or one house / building by using products taken from the same batch. This is achieved by checking the batch code label displayed on the packs.

Always, thoroughly mix products from a minimum of three packs.

Where products are supplied in packs with vertical slices always take them "vertically slice by slice" this ensures that colours are distributed evenly.

When the circumstances do not allow the use of products from the same batch then it is extremely important to minimise possible colour banding /shading by always, thoroughly mixing products from a minimum of three packs concurrently with some overlap between deliveries / batches.

Where products from different batches are being installed in the same area of paving, wall or building it is the installers responsibility to carry out a colour match check by comparing colours from each batch. If a noticeable variance in colour / shade or texture is visible, do not proceed with the installation and contact your supplier for further guidance.

Mixing thoroughly from a minimum of three packs is of particular importance when installing single colours such as Golden, Buff, Natural, Charcoal, Graphite, Silver, Mid-Grey, Sandstone, Alto Silver, Aaron Stone, Jura Grey and Innis Black.

During installation the installer must make regular visual checks to ensure the blending of colours is consistent.

We would always recommend that when purchasing products, especially in larger quantities, that they are all ordered at the same time.

Please note that the colour of new products will inevitably vary compared to those that have been installed for a period of time as weathering does take place. All colour illustrations are as accurate as the printing process will allow. For a more accurate colour match please refer to actual product samples, which can be provided.

Colours and textures illustrated are representations and therefore should not be expected to be an exact match.

The overall visual appearance of a completed installation should only be assessed from the normal viewing distance. Variations in colour/shade and texture are technically harmless, do not affect the products performance and are not deemed to be a product defect.

We will not be held liable for any discolouration or staining caused to product which has been stored incorrectly.

Note: Whilst we strive to ensure consistency, complimentary products such as Kerb Specials, Step Flags, Facing Brick Specials, Historic Circles etc. may not be an exact colour / texture or shade match to the standard version of the product as they will have been manufactured at varying times using different processes.

Tegula

Tegula is manufactured using a secondary process that distresses the edges and corners of the blocks to give the desired aged antique appearance. The process randomly distresses the blocks, therefore some blocks will be more distressed than others will, this is completely normal and does not affect the product performance.

Staining

Some chemicals that are commonly used in gardens such as lawn feed containing Ferrous Sulphate can stain concrete products. Any chemicals that are spilt must be removed immediately by rinsing away with clean water. Please check the information on the instruction label of the container holding the chemical.

As referred to in Tobermore's Conditions of Sale

Moisture

Occasionally, after installation, some units may show variations in shade and have a patchy appearance. This is due to the varying amounts of moisture within the concrete and the ground. The drying out process of concrete continues in-situ after installation. Some units may also retain more moisture than neighbouring units and take longer to dry out. This is caused by the variations in density of the naturally extracted aggregates used in the manufacturing process. Given time and natural weathering, the capillaries within the surface of the concrete will gradually close and any patches or moisture retention will dissipate as the product matures. This does not affect long-term performance.

Efflorescence

Efflorescence is a crystalline deposit that occurs naturally on the surface of concrete materials. It usually appears as a white deposit but can also be brown or yellow in appearance. Tobermore use market-leading technology to significantly suppress the occurrence of efflorescence, however, if it occurs, it may mask the colour of the product for a period of time, but tends to be washed away gradually by rain. Tobermore do not replace products with efflorescence. Packs of products which have had packaging removed should always be re-covered with appropriate packaging to prevent the occurrence of secondary efflorescence.

Surface Scratches

Minor scuffs or bruises may occur during delivery, movement onsite, and installation (for example, during any plate vibrating process). In Tobermore's experience, these marks usually weather off through time.

To reduce the risk of surface scratches we strongly recommend the use of a vibrating plate with a rubber protective mat.

Ordering

To avoid waste, please ensure that your contractor accurately measures the area on site before ordering products. In Tobermore's experience, dimensions taken from a project plan can vary significantly from the final layout.

Depending on the layout of the project, we recommend ordering an additional 2-5% of material to allow for cutting, detailing and wastage.

Manufacturing & Quality Systems

Tobermore is a BS EN ISO 9001, BS EN ISO 14001 and BES 6001 registered company. Tobermore uses an integrated management system to manage all health & safety and environmental issues.

Product Maintenance

Routine cleaning and maintenance is required to keep the overall appearance of products in pristine condition. All concrete products can develop algae, lichen, and moss growths due to environmental conditions and may require cleaning. Areas adjacent to plant borders and trees may discolour from transfer of plant-life. Tobermore cannot accept responsibility for any of these conditions.

Queries & Complaints

Please contact one of Tobermore's Paving & Walling Centres or offices (contact details at www.tobermore.co.uk) with any queries or complaints. Any complaints must be notified to Tobermore without delay.

CORE TERMS (PAVING ONLY)

Paving installed unbound should have a close joint width of 2-5mm to allow for the dimensional tolerances of products and to create a gap to allow the brushing in of kiln dried jointing sand. The straightness of lines will be dependent on workmanship and product tolerances. String lines must be used to help achieve straight lines.

Tobermore do not recommend Butt jointing as this will make achieving straight lines more difficult.

Product Maintenance

Light coloured paving blocks and flags emphasise tyre marks and oil spills on the driveway. Please note that these products will need more maintenance if overall appearance is to be maintained.

Initial Cleaning

When an area has just been paved, allow it to settle for a few days. After this, you may wish to lightly hose down the paving to remove any excess sand or dirt. The area should then be treated with a weed killer suppressant 2-3 times per year as required.

General Cleaning

Paving requires regular maintenance, including regular sweeping to prevent the build up of detritus. Tobermore recommends that paving is cleaned 2-3 times per year.

For general cleaning of dirt and algae, vigorous brushing with a stiff yard brush with plenty of hot detergent solution (washing up liquid or non-bio washing powder), thoroughly rinsed with clean water, should suffice. Repeated treatment may be required for paved areas sited beneath trees or in permanent/near permanent shade.

A light power hose at medium pressure is generally all that is required to clean general dirt and grime. Any jointing material which is removed must be replaced. Do not use high pressure power washers as aggressive power-washing can damage the product surface. A trial area should be tested before large scale powerwashing takes place.

Moss, Lichen and Algae

Thick growths of moss or lichen must be removed first by scraping out the joints and then treating the area with a moss killer such as anti-moss paving cleaner. Anti-moss is designed to remove moss, lichens and algae. It is best applied in dry weather. After being applied it will take a few days to be fully effective. Once the moss and lichens have been killed, they can easily be brushed off. Anti-moss also leaves a residue in the sand joint which will help reduce the likelihood of re-growth. The manufacturer's instructions should always be followed when using any cleaning agent.

Weeds

Large weeds should be removed by hand and then the area treated with a weed killer (available from any good garden centre). Smaller weeds can then be treated directly with weed killer and these weeds should start to die within days. The manufacturer's instructions should always be followed when using any weed killing agent.

Block Paving Sealer

It is possible to seal block paving with a resin material which combats staining and weed growth and which also enhances colour and appearance. The acrylic sealer is sprayed onto the block paving and forms a 'skin' on top of the paving and the jointing material giving an easily maintained finish. The manufacturer's instructions should always be followed when using any sealing agent.

FOR HYDROPAVE PRODUCTS

Installation - Hydropave

Tobermore recommends that its Hydropave products be installed in conjunction with a BS EN 7533-13:2009 designed permeable paving system.

Note: A permeable paving design relies heavily on using the correct aggregates. Prior to installation, we would ask you to test both the 4/20mm coarse graded aggregate and also the 6.3-2mm bedding and jointing grit as per the relevant British Standard specification (BS EN 13242:2002). In particular, the material should be categorised as LA20 according to Table 9, SZ18 according to Table 10 and MDE15 according to Table 11 within this standard. The grit should be insoluble in dilute hydrochloric acid and should be naturally occurring material. In our experience, incorrect use of aggregates is one of the most common reasons for failure of a permeable paving system.

Joint Filling

All joints must be filled to the top with 6.3 – 2mm grit to prevent movement and spalling of the blocks. We recommend that after a few weeks use, any joints which have settled and are not full, are topped up with grit. Joints should be kept filled at all times. You will need approximately one tonne of grit for every 100m² of 80mm paving.

Note: Care should be taken that the permeable joints do not become contaminated as work on the scheme is completed. Special care needs to be taken when soft landscaping is carried out so that soil does not enter the joints. When this type of work is being carried out, the surface of the permeable paving should be protected by an appropriate cover to protect the joints from being contaminated.

Hydropave Maintenance

Please refer to Tobermore's detailed 'Permeable Paving Maintenance Guidelines' available on our website: www.tobermore.co.uk

FOR EASYCLEAN PRODUCTS

Handling & Installation

During installation, the surface should be protected at all times from scratching and abrasion.

Once the protective glue dot has been removed do not stack flags directly on top of each other.

Use a plate vibrator with a rubber mat.

Do not scratch the surface with tools. (Spade, trowel etc.)

User advice

Do not drag garden furniture across the surface of the flags.

Do not pressure wash.

Do not use chemical cleaning products (e.g. solvents/acids).

FOR FACING BRICK & COUNTRY STONE PRODUCTS

Important Note:

Where the circumstances allow, it is beneficial to complete one building / structure using bricks taken from one batch and mixed on site from a minimum of 3 packs to avoid colour banding / shading. If the circumstances do not allow for this then it is important to minimise the possibility of banding / shading by always mixing bricks from 3 packs concurrently with some overlap between deliveries.

Where the site conditions allow, it will also be beneficial to take receipt of as many bricks as possible at an early stage to maximise colour consistency throughout the site.

Installation – Facing Bricks

Please refer to Tobermore's detailed 'Guide to the use of Tobermore Concrete Bricks' available on our website: www.tobermore.co.uk

Installation – Country Stone

Tobermore's Country Stone products are designed to recreate traditional stone sizes and to co-ordinate with standard cavity wall construction. When used in housing projects, a clear cavity must be retained.

All work must be protected during construction and must be designed and built in accordance with accepted industry standards and practice. Builders familiar with conventional brickwork will find that similar installation principles apply.

Joints can be finished flush or tooled depending on the overall effect required. Raked joints are not recommended. It is vital that all horizontal and vertical joints between Country Stone blocks must be compacted and free from voids. Shell bedding should not be used.

Good Practice during Construction - Facing Bricks & Country Stone

- If mortar dry's on the surface of the bricks it will stain the product and may not be removed.
- Mortar extruding from joints should be removed when the mortar is wet and during the process of laying.
- Any mortar smears on the brick surface should be removed by dry or wet brushing.
- Scaffolding should be installed as per regulatory instructions. Please note that mortar can drop and hit the scaffolding and then also go onto the wall. You should inspect the work area at all times to ensure the brick surface remains mortar free.
- When it rains be careful that any wet mortar on the scaffolding does not get 'splashed' onto the wall.
- When work stops or is interrupted by inclement weather conditions, brickwork should be protected immediately with polythene sheeting that is held in place with a suitable fixing. If new brickwork is not protected efflorescence, patchy mortar colour, patchy brickwork and staining can occur.
- Bricks should always be covered with polythene sheets to avoid getting damp or dirty when not being used.

General Cleaning Advice - Facing Bricks & Country Stone

- It is always important to keep bricks as clean as possible while laying and tooling. See Good Practice above.
- If mortar has been allowed to dry on the surface of the bricks the options you have to clean it off are as follows; Each process should be tested first and should ensure the facing bricks are not damaged - Dry brushing b. Wet brushing c. Using a 'like coloured' brick to rub the stained brick d. Pressure washing - should only be used as a last resort as it will damage the surface and the mortar joint if not completed correctly (this method cannot be attempted until the area has been allowed to set for a minimum of 7 days).
- Acid cleaning should be avoided.

Movement Joints and Mortar Guidance - Facing Bricks & Country Stone

1. NHBC recommends that walls constructed of concrete masonry units should have vertical movement joints included every 6m to allow for drying/shrinkage, see PD6697:2019, maximum ratio for brickwork panels is to be 3:1 length : height. PD6697:2019 gives advice on joint positions, the benefit of brickwork reinforcement at window openings is also covered in the same document. Movement joints should be planned prior to commencing any construction to enable them to be concealed behind down pipes etc. and ensure the aesthetics of buildings are maintained.
2. It is important to ensure that the mortar specified for the construction is suitable for the contract, see table 15 of PD6697:2019 - class M4 is the maximum recommended for normal external masonry walls. This should not be exceeded when using Tobermore Concrete facing bricks and Country Stone Walling.
3. We would recommend that you discuss this guidance with all parties involved in the design, construction and installation of the scheme. We also recommend that you refer to BS EN 1996-1-1 and PD6697:2019.
4. Specific professional advice should be obtained at all times before commencing building work.

Important Guidance Information: Tobermore Concrete Facing and Country Stone Walling

1. Professional advice, specific to the project, should be sought before commencement of the building work.
2. Tobermore Facing Bricks have different properties to clay bricks especially in relation to moisture movement. Please refer to 'Guide to the Use of Tobermore Concrete Facing Bricks', which is available on request or at www.tobermore.co.uk
3. Tobermore recommends that vertical movement joints be spaced at no more than 6m apart. Panels of brickwork where the length: height ratio exceeds 3 are particularly vulnerable to cracking; if they cannot be avoided, they should include movement joints at closer centres.
4. Movement joints should be planned prior to any construction so that they can be concealed behind drainpipes etc. Further guidance on moisture movement is available in the 'Guide to the Use of Tobermore Concrete Facing Bricks' and BSI documents BSEN 1996 (Eurocode 6) and PD 6697 (Recommendations for Design).
5. It is important to ensure that the mortar specified is suitable for the construction, see Table 15 of PD 6697. Mortar of strength class M4 will generally be suitable. Please refer to 'Guide to the use of Tobermore concrete facing bricks', which is available on request.
6. When building with dissimilar materials allowances should be made for differential movement. Design guidance from a structural engineer should be sought when combining dissimilar materials such as clay and concrete facing bricks. Examples of using dissimilar materials would be where a clay brick is used to build up to the dpc level and then Tobermore concrete facing bricks are used above the dpc. In some circumstances the dpc acts as a slip plane to separate the two materials which helps to dissipate tensile stress. However expert guidance should always be sought as to ensure structural stability as further slip planes or bed reinforcement may need to be incorporated into the design.
7. It is recommended that this guidance is discussed with all persons involved in the design and construction of the building work.

FOR SECURA PRODUCTS

Installation - Secura

All Secura products should be installed in accordance with British Standard BS8002. When constructing a retaining wall, ensure that you follow the design provided by the scheme engineer.

Contact Us

2 Lisnamuck Road
Tobermore, County L'derry
BT45 5QF

Phone

GB: 0844 800 5736
NI: 028 7964 2411
ROI: 048 7964 2411

Email

technical@tobermore.co.uk
sales@tobermore.co.uk
roisales@tobermore.ie

Website

tobermore.co.uk
tobermore.ie

