

# Centaurus

## Braemar Constellation

200 x 100 x 80

Created using a blend of three cool contemporary greys, Braemar's Centaurus is a mix of Innis Black, Alto Silver and Jura Grey.

The range of tones offers a unique and modern aesthetic perfect to complement any scheme. Available in both Ground and Ground Textured, bring your visions to life with Centaurus.



SCAN HERE



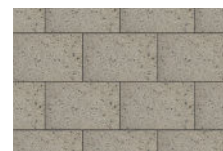
Finish



80mm

Depth

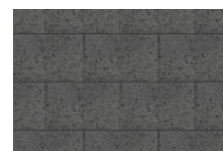
1. Jura Grey



2. Alto Silver



3. Innis Black


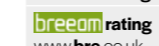


4. Arran Stone



### Specification

 PrimeTop  Ef-Stop

<b>Product type</b>	Concrete Paving Block	
<b>Manufactured to</b>	<b>BS EN 1338:2003</b>	200X100X80mm
<b>Surface Layer</b>	Hard-wearing surface layer with a minimum of 4mm and >390kgs/m <sup>3</sup> cement	
<b>Surface Finish</b>	Ground/Ground Textured	
<b>Granite Content in Surface Layer</b> (Not less than %)	Arran Stone 83.3%	Alto Silver 63.3%
	Innis Black 53.3%	Jura Grey 51.3%
<b>Efflorescence</b>	Minimum 12 hour vapour curing to significantly reduce the possibility of efflorescence	
<b>Slip/Skid risk</b>	Mean polished skid resistance value (PSRV) >45 Mean unpolished skid resistance value (USRV) >45	
<b>Installed to</b>	<b>BS 7533-3:2005</b>	200X100X80mm
	Details available on request	
<b>Strength</b>	<b>BS EN 1338:2003</b>	Typical tensile splitting strength of >3.6MPa
	<b>BS EN 1339:2003</b>	Typical tensile splitting strength of >5MPa (Class 3)
<b>BS</b>	<b>Plus Q24 110</b>	200X100X80mm
	<b>Create 45-20 64/400</b>	
<b>Tolerances on Dimensions (mm)</b>	Length ±2mm, width ±2mm, thickness ±3mm	
<b>Abrasion Resistance</b>	Class 3	
<b>Durability (Freeze-thaw)</b>	Class 3	
<b>External Fire Performance</b>	Deemed to satisfy. See Commission Decision 2000/553/EC	
<b>Reaction to fire</b>	Class A1	
<b>Applications</b>	Refer to the relevant part of BS 7533 for the correct sub-base design and the most suitable product size for your application. Available from <a href="http://www.bsigroup.com">www.bsigroup.com</a>	
<b>Energy used</b>	100% renewable energy	
<b>Water used</b>	100% from our rainwater harvesting system and groundwater bore hole	
<b>Recycled content</b>	<b>Not less than 10%</b>	200X100X80mm
 <b>Carbon Footprint</b>	50.74kgCo <sup>2</sup> e/m <sup>2</sup> (+7%, -0.6% depending on specific product)	
<b>Recyclable</b>	100% of this product can be recycled	
<b>Manufacturing &amp; Delivery</b>	From one location within the UK	
 <b>Breeam rating</b> <a href="http://www.bre.co.uk">www.bre.co.uk</a>	<b>B</b> , according to the Green Guide to Specification, 4 <sup>th</sup> Edition 2009. <b>A</b> , can be achieved when used in conjunction with a prepared recycled sub-base.	

Tobermore products are manufactured in accordance with an accredited ISO 9001:2015 Quality Management. Manufacturing facilities are accredited to ISO14001:2015 Environmental Management. The company publish environmental labels and declarations in accordance with BES 6001.

product	size (mm)	edge	colours available	in stock	m <sup>2</sup> per pack	m <sup>2</sup> per slice	no. per m <sup>2</sup>	no. per pack	weight kg per pack GB	weight kg per pack NI/ROI
<b>Braemar Centaurus</b>	200 x 100 x 80	Square edge	Innis Black, Arran Stone, Alto Silver & Jura Grey Centaurus Mix	YES	9.6	1.6	50	480	1756	1746

**Contact Us**

GB: 0844 800 5736  
NI: 028 7964 2411  
ROI: 048 7964 2411

**Email**

technical@tobermore.co.uk  
sales@tobermore.co.uk

# Centaurus

## Braemar Constellation

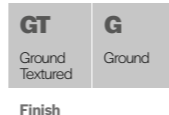
300 x 200 x 80

Created using a blend of three cool contemporary greys, Braemar's Centaurus is a mix of Innis Black, Alto Silver and Jura Grey.

The range of tones offers a unique and modern aesthetic perfect to complement any scheme. Available in both Ground and Ground Textured, bring your visions to life with Centaurus.



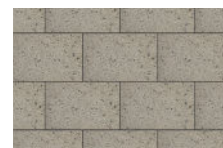
SCAN HERE



80mm

Depth

1. Jura Grey



2. Alto Silver



3. Innis Black





4. Arran Stone



### Specification



<b>Product type</b>	Concrete Paving Block	
<b>Manufactured to</b>	<b>BS EN 1338:2003</b>	300X200X80mm
<b>Surface Layer</b>	Hard-wearing surface layer with a minimum of 4mm and >390kgs/m <sup>3</sup> cement	
<b>Surface Finish</b>	Ground/Ground Textured	
<b>Granite Content in Surface Layer</b> (Not less than %)	Arran Stone 83.3%	Alto Silver 63.3%
	Innis Black 53.3%	Jura Grey 51.3%
<b>Efflorescence</b>	Minimum 12 hour vapour curing to significantly reduce the possibility of efflorescence	
<b>Slip/Skid risk</b>	Mean polished skid resistance value (PSRV) >45 Mean unpolished skid resistance value (USRV) >45	
<b>Installed to</b>	<b>BS 7533-3:2005</b>	300X200X80mm
	Details available on request	
<b>Strength</b>	<b>BS EN 1338:2003</b>	Typical tensile splitting strength of >3.6MPa
	<b>BS EN 1339:2003</b>	Typical tensile splitting strength of >5MPa (Class 3)
<b>BS</b>	<b>Plus Q24 110</b>	300X200X80mm
	<b>Create 45-20 64/400</b>	
<b>Tolerances on Dimensions (mm)</b>	Length ±2mm, width ±2mm, thickness ±3mm	
<b>Abrasion Resistance</b>	Class 3	
<b>Durability (Freeze-thaw)</b>	Class 3	
<b>External Fire Performance</b>	Deemed to satisfy. See Commission Decision 2000/553/EC	
<b>Reaction to fire</b>	Class A1	
<b>Applications</b>	Refer to the relevant part of BS 7533 for the correct sub-base design and the most suitable product size for your application. Available from <a href="http://www.bsigroup.com">www.bsigroup.com</a>	
<b>Energy used</b>	100% renewable energy	
<b>Water used</b>	100% from our rainwater harvesting system and groundwater bore hole	
<b>Recycled content</b>	<b>Not less than 10%</b>	300X200X80mm
 <b>Carbon Footprint</b>	50.74kgCo <sub>2</sub> e/m <sup>2</sup> (+7%, -0.6% depending on specific product)	
<b>Recyclable</b>	100% of this product can be recycled	
<b>Manufacturing &amp; Delivery</b>	From one location within the UK	
 <b>Breeam rating</b> <a href="http://www.bre.co.uk">www.bre.co.uk</a>	<b>B</b> , according to the Green Guide to Specification, 4 <sup>th</sup> Edition 2009. <b>A</b> , can be achieved when used in conjunction with a prepared recycled sub-base.	

Tobermore products are manufactured in accordance with an accredited ISO 9001:2015 Quality Management. Manufacturing facilities are accredited to ISO14001:2015 Environmental Management. The company publish environmental labels and declarations in accordance with BES 6001.

product	size (mm)	edge	colours available	in stock	m <sup>2</sup> per pack	m <sup>2</sup> per slice	no. per m <sup>2</sup>	no. per pack	weight kg per pack GB	weight kg per pack NI/ROI
<b>Braemar Centaurus</b>	300 x 200 x 80	Square edge	Innis Black, Arran Stone, Alto Silver & Jura Grey Centaurus Mix	YES	9.6	2.4	16.66	160	1756	1746

**Contact Us**

GB: 0844 800 5736  
NI: 028 7964 2411  
ROI: 048 7964 2411

**Email**

[technical@tobermore.co.uk](mailto:technical@tobermore.co.uk)  
[sales@tobermore.co.uk](mailto:sales@tobermore.co.uk)

# Centaurus

## Braemar Constellation

600 x 300 x 80

Created using a blend of three cool contemporary greys, Braemar's Centaurus is a mix of Innis Black, Alto Silver and Jura Grey.

The range of tones offers a unique and modern aesthetic perfect to complement any scheme. Available in both Ground and Ground Textured, bring your visions to life with Centaurus.



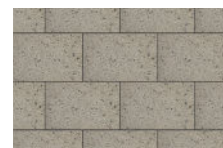
SCAN HERE



80mm

Depth

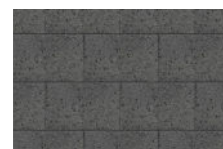
1. Jura Grey



2. Alto Silver



3. Innis Black





4. Arran Stone



### Specification

<b>Product type</b>	Concrete Paving Block	
<b>Manufactured to</b>	<b>BS EN 1339:2003</b>	600X300X80mm
<b>Surface Layer</b>	Hard-wearing surface layer with a minimum of 4mm and >390kgs/m <sup>3</sup> cement	
<b>Surface Finish</b>	Ground/Ground Textured	
<b>Granite Content in Surface Layer</b> (Not less than %)	Arran Stone 83.3% Alto Silver 63.3% Innis Black 53.3% Jura Grey 51.3%	
<b>Efflorescence</b>	Minimum 12 hour vapour curing to significantly reduce the possibility of efflorescence	
<b>Slip/Skid risk</b>	Mean polished skid resistance value (PSRV) >45 Mean unpolished skid resistance value (USRV) >45	
<b>Installed to</b>	<b>BS 7533-4:2006</b>	600X300X80mm
	Details available on request	
<b>Strength</b>	<b>BS EN 1338:2003</b>	Typical tensile splitting strength of >3.6MPa
	<b>BS EN 1339:2003</b>	Typical tensile splitting strength of >5MPa (Class 3)
<b>EN 12424</b>	<b>Plus</b> Q24 110 <b>Create</b> 45-20 64/395	600X300X80mm
<b>Tolerances on Dimensions (mm)</b>	Length ±2mm, width ±2mm, thickness ±3mm	
<b>Abrasion Resistance</b>	Class 3	
<b>Durability (Freeze-thaw)</b>	Class 3	
<b>External Fire Performance</b>	Deemed to satisfy. See Commission Decision 2000/553/EC	
<b>Reaction to fire</b>	Class A1	
<b>Applications</b>	Refer to the relevant part of BS 7533 for the correct sub-base design and the most suitable product size for your application. Available from <a href="http://www.bsigroup.com">www.bsigroup.com</a>	
<b>Energy used</b>	100% renewable energy	
<b>Water used</b>	100% from our rainwater harvesting system and groundwater bore hole	
<b>Recycled content</b>	<b>Not less than 6%</b>	600X300X80mm
 <b>Carbon Footprint</b>	50.74kgCo <sub>2</sub> e/m <sup>2</sup> (+7%, -0.6% depending on specific product)	
<b>Recyclable</b>	100% of this product can be recycled	
<b>Manufacturing &amp; Delivery</b>	From one location within the UK	
 <b>Breeam rating</b> <a href="http://www.bre.co.uk">www.bre.co.uk</a>	<b>B</b> , according to the Green Guide to Specification, 4 <sup>th</sup> Edition 2009. <b>A</b> , can be achieved when used in conjunction with a prepared recycled sub-base.	
Tobermore products are manufactured in accordance with an accredited ISO 9001:2015 Quality Management. Manufacturing facilities are accredited to ISO14001:2015 Environmental Management. The company publish environmental labels and declarations in accordance with BES 6001.		

product	size (mm)	edge	colours available	in stock	m <sup>2</sup> per pack	m <sup>2</sup> per slice	no. per m <sup>2</sup>	no. per pack	weight kg per pack GB	weight kg per pack NI/ROI
<b>Braemar Centaurus</b>	600 x 300 x 80	Square edge	Innis Black, Arran Stone, Alto Silver & Jura Grey Centaurus Mix	YES	7.2	3.6	5.55	40	1319	1309