

The Pumphouse

Barry

Case Study

22

Products Used:

Tegula

Bracken

Manhattan

Silver



The Pumphouse, Barry

Architects
Ellis Williams Architects

Contractor
DT Contractors

The Challenge

Redeveloping The Pumphouse, a historic dock complex in Barry.

DS Properties undertook the redevelopment of the Grade 2 listed Pumphouse in Barry which previously formed part of Barry's historic dock complex.

Retaining the nostalgic style of the historical Pumphouse was hugely important to DS Properties who were seeking hard landscaping products that would complement the traditional surroundings in this mixed use redevelopment.

Alex Knight, Development Surveyor at DS Properties commented;

"As tarmac was incorporated on part of the site, we wanted to break up the space and create a more visually attractive external area. The landscape needed to harmonise with the historic buildings and be sympathetic to the traditional backdrop on site."



The Solution

Tobermore Tegula and Manhattan Paving Block Paving.

Tobermore provided the perfect solution in the form of block paving, Tegula, with its antique appearance for the main areas of hard landscaping.

As part of the landscape design, the Manhattan plank paving was delicately intertwined with Tegula to create a stylish square border pattern running throughout, with a contrasting appearance similar to natural granite.

Alex commented on the result of the redevelopment scheme; *"There were no issues encountered during the design and construction process"*

n55

Tegula

Plus: Q24 110 Create: 45-20-64/400

Manhattan

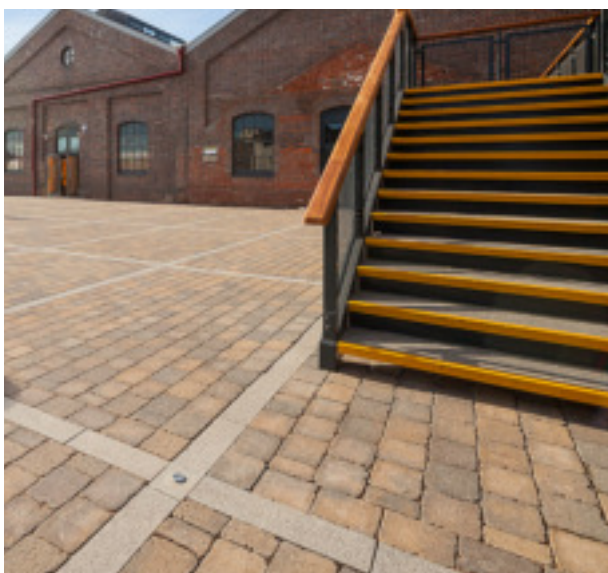
Plus: Q24 110 Create: 45-20-64/400

We are absolutely delighted with the result and in reference to the hard landscaping works, we would most certainly recommend the products and service provided by Tobermore – it was excellent.

Alex Knight

Development Surveyor
at DS Properties





Contact Us

GB: 0844 800 5736

NI: 028 7964 2411

ROI: 048 7964 2411

Email

technical@tobermore.co.uk

sales@tobermore.co.uk

tobermore.co.uk

