



Paving Flags

For Patios



Mayfair Flags Silver
Sienna Setts Graphite
Step Risers Charcoal

Contents

Premium Palio Collection

Introduction	4
Braemar Flags	6
Mayfair Flags	8

Elegance Palio Collection

Introduction	10
Historic Flags	12
Historic Circles	14
Beaufort Flags	16
Textured Flags	18

Lifestyle Palio Collection

Introduction	20
Riven Flags	22
Classica Flags	24

Finishing Touches

Introduction	26
Kerbs	27
Kerbs Special	28
Step Risers	28
Kerbs & Edging	28
Steps & Ramps	29

Case Studies

Summer Suntrap	30
Coastal Patio	32

Additional Information

Why Choose Tobermore?	34
PrimeTop	34
Ef-Stop	34
Resources	36
Instructions & Warnings	38



Premium

PATIO COLLECTION 

Excellence in patio flags from Tobermore. The perfect premium product for your patio.

Contemporary appearance, superior quality and a long-lasting finish, the Premium Patio collection from Tobermore brings excellence in quality and style to any outdoor area.

The Premium Patio collection combines the aesthetics of natural granite with the benefits of modern paving, producing a contemporary style paving collection.





Braemar Flags Ground Alto Silver
Sienna Setts Graphite
Kerb Small Charcoal

Braemar Flags



✔ PrimeTop ✔ Ef-Stop

Striking, premium flags.

Striking, premium flags perfect for the modern home. Add real value to your home and fulfill your outdoor aspirations with these expertly finished flags. Create a space with timeless style partnered with longevity.

- Premium flag with the appeal of natural stone
- Hard-wearing and durable granite surface

Alto Silver Ground



SCAN HERE

Product	Size (mm)	Edge	Colours Available	m² per pack	No. per m²	No. per pack	NI /ROI Weight per pack (kg)	GB Weight per pack (kg)
Braemar Ground	600 x 400 x 50	Chamfered	Alto Silver	4.80	4.16	20	584	589



Braemar Flags Ground Alto Silver



Mayfair Flags Silver
Kerbstone Charcoal

Mayfair Flags



✔ PrimeTop ✔ Ef-Stop

Striking, modern, sparkling paving.

Mayfair flags add a sophisticated feel to an outdoor space, fit for both modern and traditional homes. These stunning flags, manufactured with natural granite aggregates, mimic the look and feel of natural granite.

An excellent choice to introduce stylish minimalism to your outdoors.

- Hard-wearing and durable granite surface
- Vibrant long-lasting colours
- Creates a striking, modern look similar to natural granite
- Suitable for use on paths and patios

Silver



Graphite



Sandstone



SCAN HERE

Product	Size (mm)	Edge	Colours available	No. per m²	No. per pack	No. per pallet	NI /ROI Weight per pack (kg)	GB Weight per pack (kg)
Mayfair Flags	400 x 400 x 40	Chamfered	Graphite, Sandstone, Silver	6.25	25	100	382	384
	450 x 450 x 35	Chamfered	Graphite, Sandstone, Silver	4.94	30	120	525	529
	450 x 450 x 50	Chamfered	Graphite, Sandstone, Silver	4.94	20	80	466	466
	600 x 600 x 50	Chamfered	Graphite, Sandstone, Silver	2.78	20	20	851	859
	600 x 400 x 50	Chamfered	Graphite, Sandstone, Silver	4.16	20	40	580	584
EasyClean (NI / ROI Only)	400 x 400 x 40	Chamfered	Graphite, Sandstone, Silver	6.25	25	100	382	
Edge Step	400 x 400 x 40	Chamfered	Silver	6.25	25	100	401	403
Corner Step	400 x 400 x 40	Chamfered	Silver	6.25	25	100	401	401



Mayfair Flags Sandstone
Tegula Setts Charcoal

Elegance

PATIO COLLECTION



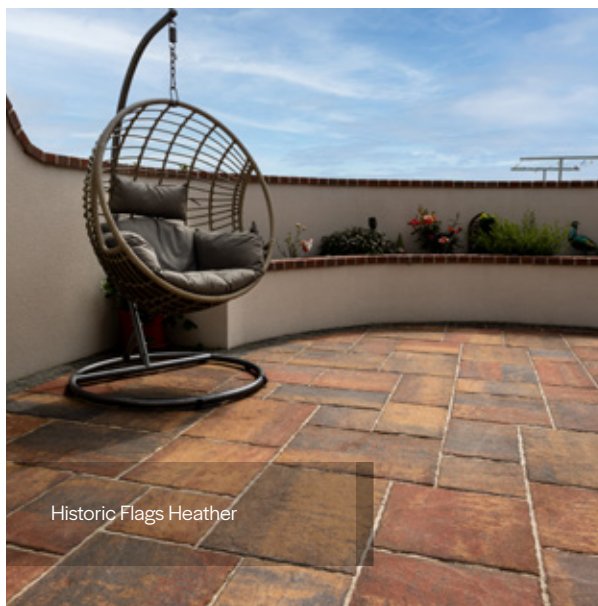
The natural aged appearance of the Elegance patio flag collection will bring a distinctive quality and charm to any patio.

The Elegance patio flag collection combines the aesthetic appeal of aged stone with the superior manufacturing quality from Tobermore.

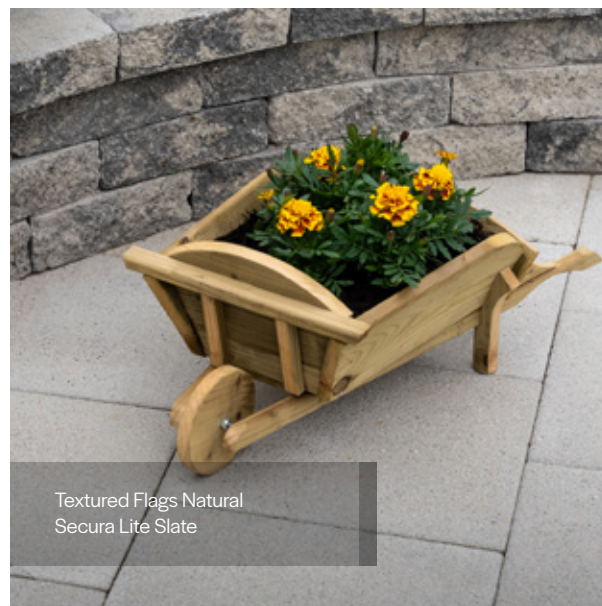
The authentic, natural appearance of the Elegance patio flag collection will bring a vintage style and charm to any patio.



Beaufort Flags Charcoal



Historic Flags Heather



Textured Flags Natural
Secura Lite Slate



Historic Flags Bracken



Historic Flags & Circle Slate
Sienna Setts Silver
Kerbstone Charcoal
Lansdowne Heather

Historic Flags



PrimeTop Ef-Stop

Natural stone alternative.

Historic paving is the perfect choice for anyone looking to bring a rustic tone to their patio. With its contoured surface, Historic provides the look and feel of natural stone, but with the durability of a carefully manufactured product.

Historic flags are available in a pack of five different sizes, allowing you to create a mixed laying pattern with an organic look.

- Provides the look and feel of traditional natural stone
- Superb hard-wearing surface
- Vibrant long-lasting colours
- Features a beautiful contoured face and edges
- Available in a mixed size pack
- An inspiring focal point can be created with a Historic Circle

Bracken



Heather



Slate




SCAN HERE

Product	Size (mm)	Edge	Colours Available	m ² per pack	No. per pack	No. per pallet	NI /ROI Weight per pack (kg)	GB Weight per pack (kg)
Historic Flags (All sizes in one pack)	600 x 450 x 50	Fettled	Bracken, Heather, Slate	14.04 m ² per pack	13	78	1596	1596
	600 x 300 x 50				13			
	450 x 450 x 50				26			
	450 x 300 x 50			1.08 m ² per slice	13			
	300 x 300 x 50				13			

Historic Flags Heather





Historic Flags & Circle Slate
Sienna Setts Silver
Shannon Slate

Historic Circles



✓ PrimeTop ✓ Ef-Stop

Create a focal point in your patio by adding a Historic Circle.

Traditional gardens are full of colour and textured finishes. Curved paths and features such as paved circles help create that traditional style.

Circles can be incorporated into a patio or positioned as a standalone feature for a table and chairs.

A historic path leading to a circle is the perfect finishing touch for your patio.

Bracken



Heather



Slate



SCAN HERE

Product	Size (mm)	Edge	Colours Available	m ² per pack	No. per pack	No. per pallet	NI /ROI Weight per pack (kg)	GB Weight per pack (kg)
Historic Circle (Sold as one unit)	50 x 2,24m diameter	Fettled	Bracken, Heather, Slate	3.94 m ² per pack	1 unit	-	455	455



Historic Flags & Circle Slate
Kerbstone Charcoal



Beaufort Flags Natural & Charcoal

Beaufort Flags



✔ PrimeTop ✔ Ef-Stop

Subtle, contoured appearance.

Beaufort Flags have a soft contoured appearance with a subtle sparkle in each flag to give your outside space a luxurious, modern feel. An understated product with a sophisticated feel.

- Textured, modern appearance
- Natural, muted colour range
- Suitable for use on paths and patios

Buff



Charcoal



Natural



SCAN HERE

Product	Size (mm)	Edge	Colours available	No. per m ²	No. per pack	No. per pallet	NI /ROI Weight per pack (kg)	GB Weight per pack (kg)
Beaufort Flags	450 x 450 x 35	Chamfered	Buff, Charcoal, Natural	4.94	30	120	511	515
	400 x 400 x 40	Chamfered	Buff, Charcoal, Natural	6.25	25	100	400	403
	600 x 400 x 40	Chamfered	Charcoal, Natural	4.16	25	100	560	569
EasyClean (NI / ROI Only)	400 x 400 x 40	Chamfered	Charcoal, Natural	6.25	25	100	400	



Beaufort Flags Buff



Textured Flags Natural

Textured Flags



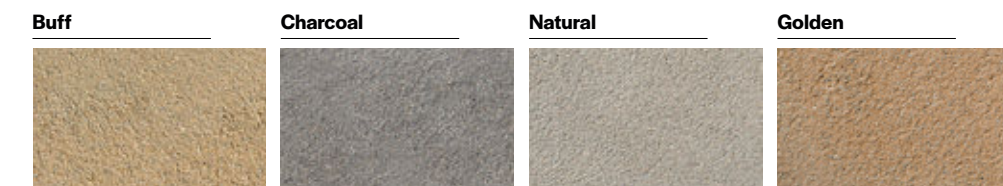
✔ PrimeTop ✔ Ef-Stop

Stylish, granular surface.

The Textured flag range is the stylish, practical flag option from Tobermore. The fine-grained, textured surface of this range provides a subtle, sparkle finish, suitable for modern or traditional settings.

The textured range is available in a range of soft, neutral shades which can be perfectly complemented with the range of Setts available.

- Superb hard-wearing textured surface
- Vibrant long-lasting colours
- Natural appearance



SCAN HERE

Product	Size (mm)	Edge	Colours Available	No. per m ²	No. per pack	No. per pallet	NI /ROI Weight per pack (kg)	GB Weight per pack (kg)
Textured Flags	400 x 400 x 32	Chamfered	Charcoal, Golden, Natural	6.25	30	120	385	387
	400 x 400 x 40	Chamfered	Charcoal, Golden, Natural	6.25	25	100	400	403
	450 x 450 x 50	Chamfered	Buff, Charcoal, Natural	4.94	60	60	1480	1490
	450 x 450 x 35	Chamfered	Buff, Charcoal, Natural	4.94	30	120	517	521
	600 x 400 x 40	Chamfered	Charcoal, Natural	4.16	25	50	1150	1225
	600 x 600 x 40	Chamfered	Buff, Charcoal, Natural	2.78	24	24	840	848
	600 x 600 x 50	Chamfered	Buff, Charcoal, Natural	2.78	20	20	842	850



Textured Flags Golden

Lifestyle

PATIO COLLECTION



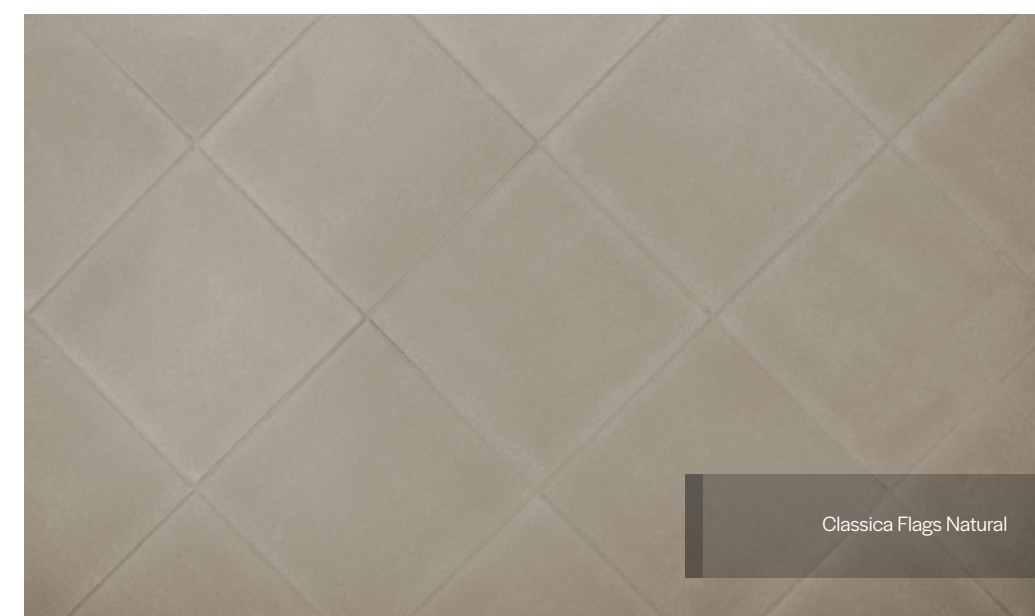
Create a beautiful paved area to suit your lifestyle.

The Lifestyle patio flag collection is an economical option for those looking for a high quality and cost-effective patio. This collection brings together quality, durable and affordable paving slabs.

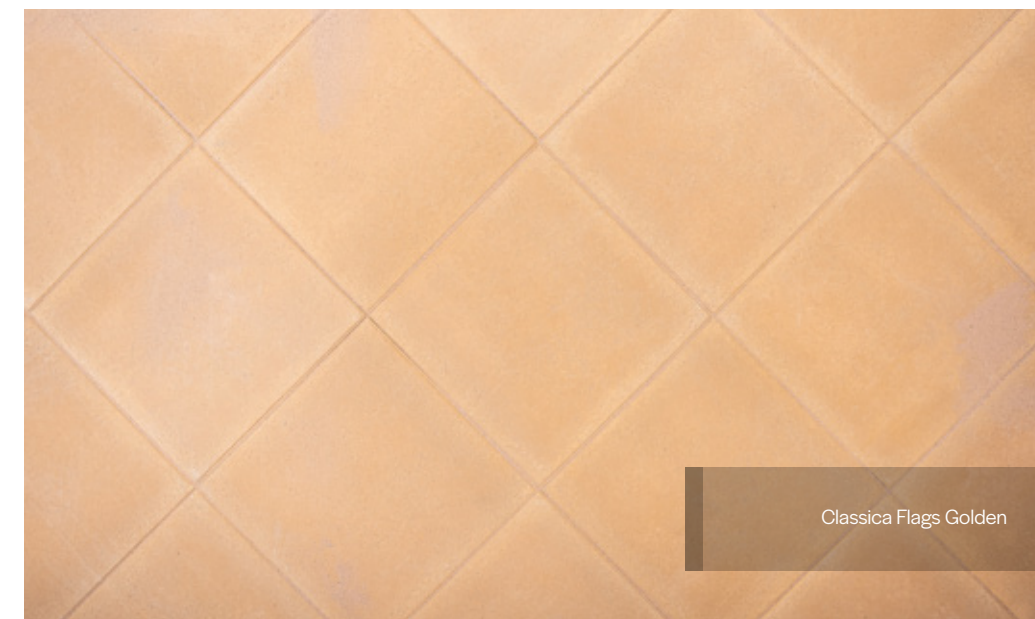
Suitable for paths, patios and other outdoor home projects.



Riven Flags Buff



Classica Flags Natural



Classica Flags Golden



Riven Flags Buff



Riven Flags Buff

Riven Flags



✔ PrimeTop ✔ Ef-Stop

Soft rippled surface.

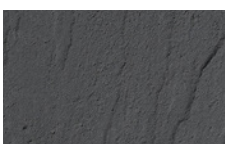
Cut down on costs without compromising on style with Riven Flags. Available in a range of soft muted colours, the straight edges and riven surface of the flags introduces a subtle sense of texture to your outdoor space.

- Superb hard-wearing riven surface
- Vibrant long-lasting colours
- Resembles the rugged appearance of natural stone

Buff



Charcoal



Natural



Golden



SCAN HERE

Product	Size (mm)	Edge	Colours Available	No. per m ²	No. per pack	No. per pallet	NI /ROI Weight per pack (kg)	GB Weight per pack (kg)
Riven Flags	400 x 400 x 32	Chamfered	Charcoal, Golden, Natural	6.25	30	120	398	400
	450 x 450 x 35	Chamfered	Charcoal, Natural, Buff	4.94	30	120	528	532
	600 x 600 x 40	Chamfered	Charcoal, Natural, Buff	2.78	24	24	840	848

Riven Flags Natural



Classica Flags



✔ PrimeTop ✔ Ef-Stop

Simple, stylish and durable.

A versatile and economical paving solution, the Classica paving flag range comes in a range of sizes and vibrant colours. These are perfect for patios and paths that require simple yet practical paving.

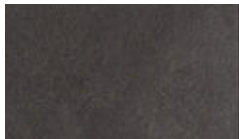
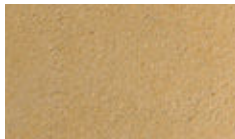
- Superb hard-wearing surface
- Vibrant long-lasting colours
- Cost-effective alternative

Buff

Charcoal

Natural

Golden



SCAN HERE

Product	Size (mm)	Edge	Colours Available	No. per m ²	No. per pack	No. per pallet	NI /ROI Weight per pack (kg)	GB Weight per pack (kg)
Classica Flags	400 x 400 x 32	Chamfered	Charcoal, Golden, Natural	6.25	30	120	392	394
	400 x 400 x 40	Chamfered	Charcoal, Golden, Natural	6.25	25	100	400	400
	450 x 450 x 35	Chamfered	Buff, Charcoal, Natural	4.94	30	120	511	517
	450 x 450 x 50	Chamfered	Buff, Charcoal, Natural	4.94	20	80	1480	1404
	600 x 400 x 40	Chamfered	Charcoal, Natural	4.16	25	50	1150	1225
	600 x 600 x 40	Chamfered	Buff, Charcoal, Natural	2.78	24	24	840	833
	600 x 600 x 50	Chamfered	Charcoal, Natural	2.78	20	20	842	850

Classica Flags Natural
Tegula Setts Charcoal



Classica Flags Golden

Finishing Touches

Complete the look



SCAN HERE



Kerbstone
Tumbled kerb edging.



Kerb Small
Versatile, small smooth kerb.



Kerb Large
Versatile, large smooth kerb.



Tegula Kerb Large
Traditional, aged effect kerbs.



Tegula Setts
Traditional styling.



Sienna Setts
Attractive borders and features.



Kerbs & Edging



Kerb Specials



Steps & Ramps



Kerbstone Charcoal & Shannon Slate



Step Risers Charcoal



Sienna Setts Silver



Kerbstone Bracken &
Sienna Setts Sandstone

Kerbstone



Heather



Bracken



Charcoal



SCAN HERE

Product	Size (mm)	Colours Available	No. per slice	No. per pack	NI / ROI Weight per pack (kg)	GB Weight per pack (kg)
Kerbstone	190 x 160 x 100	Bracken, Charcoal, Heather	35	210	1450	1449
	104 x 173 x 80	Bracken, Charcoal, Heather	72	504	1628	1638

Kerb Small (KS)



Charcoal



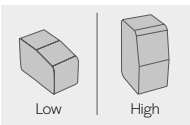
SCAN HERE

Product	Size (mm)	Colours Available	LM per pack	LM per slice	No. per pack	NI / ROI Weight per pack (kg)	GB Weight per pack (kg)
Kerb Small (KS)	125 x 127 x 100	Charcoal	43.2	5.4	432	1505	1506

Tegula Kerb Large (TKL)



Charcoal



Dual purpose profile



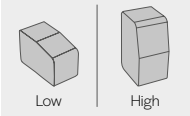
SCAN HERE

Product	Size (mm)	Colours Available	No. per slice	No. per pack	NI / ROI Weight per pack (kg)	GB Weight per pack (kg)
Tegula Kerb Large (TKL)	200 x 127 x 100	Charcoal	48	288	1539	1549

Kerb Large (KL)



Charcoal



Dual purpose profile



SCAN HERE

Product	Size (mm)	Colours Available	LM per pack	LM per slice	No. per pack	NI / ROI Weight per pack (kg)	GB Weight per pack (kg)
Kerb Large (KL)	200 x 127 x 100	Charcoal	28.8	4.8	288	1539	1549

Kerb Specials

Kerb Large (KL) Specials



Half Battered 90° Angle
Internal



Half Battered 90° Angle
External



Flat 90° Angle
Internal



Flat 90° Angle
External



Bullnosed 90° Angle
Internal



Bullnosed 90° Angle
External

Tegula Kerb Large (TKL) Specials



Half Battered 90° Angle
Internal



Half Battered 90° Angle
External



Flat 90° Angle
Internal



Flat 90° Angle
External



Bullnosed 90° Angle
Internal



Bullnosed 90° Angle
External

Note: The colour of Kerb Specials may slightly vary to the normal Kerbs.

Steps Risers



SCAN HERE



Heather



Bracken



Charcoal

Product	Size (mm)	Colours Available	No. per slice	No. per pack	NI / ROI Weight (kg) per pack	GB Weight (kg) per pack
Step Riser	160 x 190 x 100	Bracken, Charcoal, Heather	40	240	1659	1649
	173 x 104 x 80	Bracken, Charcoal, Heather	80	560	1855	1859

Kerbs & Edging



SCAN HERE



Fusion Kerb



Textured Kerb



Garden Edge (flat top)

Product	Size (mm)	Colours Available	No. per pack	NI / ROI Weight per pack (kg)	GB Weight per pack (kg)
Fusion Kerb	255 x 125 x 915	Silver	16	1251	1241
	255 x 145 x 915	Silver	16	1282	1280
Fusion Edge	150 x 75 x 900	Silver	60	1200	1200
Textured Kerb	255 x 125 x 915	Natural	18	1251	1251
Garden Edge (flat top)	150 x 75 x 900	Natural	60	1200	

Steps & Ramps

There are no limits to what is achievable when it comes to designing and constructing steps. The renowned versatility of Tobermore products gives you the ability to design and create steps in a wide range of sizes, shapes and colours. You can select various texture and colour combinations to create steps as an attractive feature to any doorway, garden or patio.



SCAN HERE



Step Risers Charcoal & Historic Bracken



Mayfair Step Flags Silver



Fusion Kerb Silver

Summer Suntrap

Project Type
Patio

Products Used
Mayfair Flags Sandstone, Garden Stone Bracken, Tegula Setts Charcoal, Kerbstone Bracken

When Rachel Shivers Wilson and her family decided to redesign their patio area, making the most of the sun was a top priority.



“

We are delighted with the finished project, the kids absolutely love it and it's really opened up our home and allows us to use our outside area more than we would have previously. ”

Rachel, Homeowner

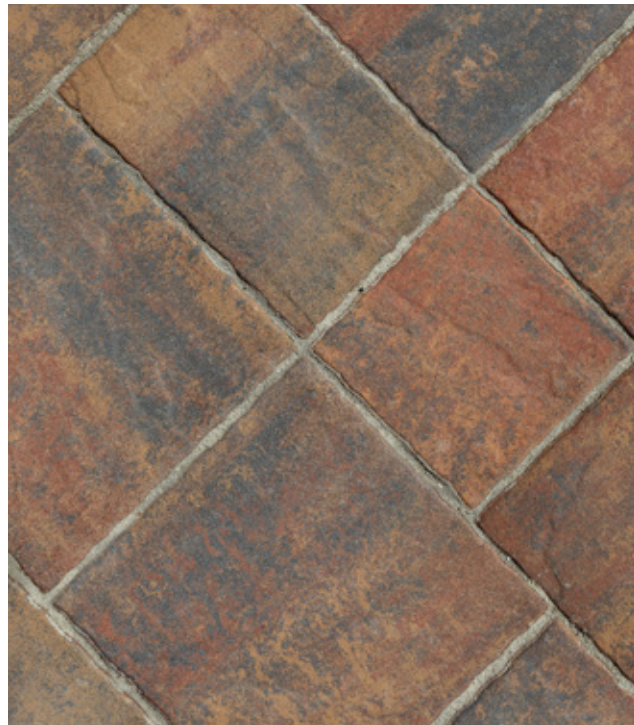


Coastal Patio

Project Type
Patio

Products Used
Historic Flags Heather, Step Risers Charcoal, Tegula Setts Charcoal

With a beautiful property on the north coast of Northern Ireland, Anna and Paul wanted a patio and outside space where they could enjoy the scenic countryside and coastal view all year round.



“

We are thrilled with how it all looks and how easy the process has been. We plan to plant some shrubs later in the year to really finish off the area, but we are delighted with our new patio. ”

Anna, Homeowner



Why choose Tobermore?



Our Commitment To You
At Tobermore, we go above and beyond to bring you the highest quality block paving and walling products, as well as an outstanding service.



Extensive Product Range
All our paving and walling products feature various styles, finishes, sizes and colours, meaning there is always a product to suit your home, your preferred style and your budget.



Responsible Manufacturer
Tobermore is committed to manufacturing responsibly. Our factories have their own wind turbine, solar panels and rainwater harvesting system and we've cut our packaging carbon footprint by 20% too.



Reputation For Quality
We've become well-known for our high standards. All our paving and walling products are rigorously quality checked throughout the manufacturing process, right up to when they arrive at your home.



Advice And Guidance
We have a host of online inspiration and design tools to help you bring your project to reality. Browse our Inspiration Gallery for ideas, then use our Paving Creator or Paving Visualise Service to get started.



Network Of Registered Contractors
The Tobermore Registered Contractor Scheme will help you find a paving and walling contractor in your area. Use our handy online search tool to find a Tobermore Registered Contractor for your project.



Nationwide Stockists Across UK And Ireland
In Northern Ireland, we have paving centres open to the public in Tobermore and Bangor. We have a large network of approved stockists across GB and the Republic of Ireland waiting to help you.

✓ Ef-Stop®

Efflorescence is the white substance which can appear on the surface of concrete paving. The cause of Efflorescence is simply a chemical reaction between the cement in the concrete and rainwater.

If efflorescence appears on your paving, the key thing to remember is that is temporary and poses no risk to the structural integrity of the paving. It will wash away over time.

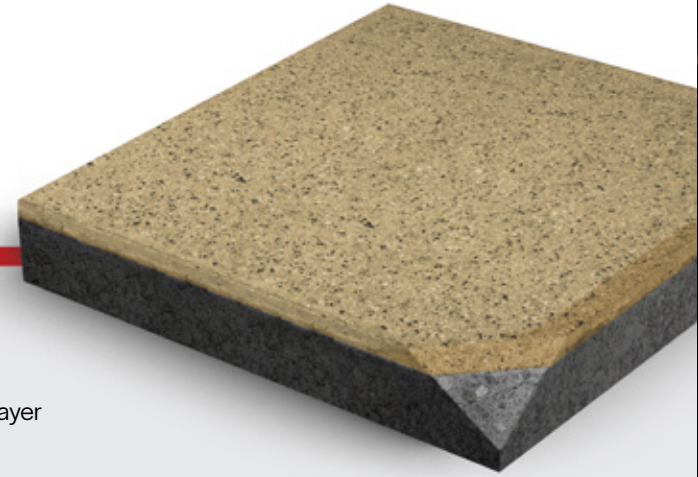
During manufacturing, we cure our products in a warm vapour which ensures that efflorescence is dramatically reduced. This process also enhances the colour, improves the strength and cures the products much faster. We call this process Ef-Stop.



✓ PrimeTop®

PrimeTop is the name we have given to the premium, hard-wearing surface layer on our paving products.

This layer adds a hardened surface with enhanced strength, vibrant long-lasting colours and increased resistance to wear and tear.



Speak to a Tobermore Paving & Walling Advisor



If you would like to start an outdoor project and have lots of questions - speak to a Tobermore Paving & Walling Advisor.

A Tobermore Paving and Walling Advisor can make your life easy and help you make the right decisions when choosing a new driveway, patio or walling feature. Getting advice at the outset can save you time and energy with simple, practical and relevant advice.

This is a **no-obligation** advice service to assist you on your journey to achieving a fantastic project.

Contact us:

From GB: 0345 608 1250
From NI: 028 7963 6600
From ROI: 048 7964 2411
Email: ChooseTobermore@tobermore.co.uk

Find a Registered Paving Contractor



SCAN HERE

Quickly and easily find a Registered Paving Contractor near you. Visit the website or scan the QR code and enter your postcode to see a list of Registered Paving Contractors near you.

tobermore.co.uk/homeowner/find-paving-contractor



Where to Buy?

If you are based in Northern Ireland, visit one of our paving centres located in Tobermore or Bangor.

Alternatively you can search our large network of approved Tobermore paving and walling stockists across Great Britain and ROI.



SCAN HERE

Design Tools

The tobermore homeowner website is packed full of tools and services you can use to plan the outdoor area of your dreams, right from the comfort of your own home.

My Favourites ❤️

The Inspiration Gallery now has a 'My Favourites' feature which allows you to filter your favourite Tobermore projects and create your own project mood board to save or share with a friend.

Visit: tobermore.co.uk/homeowner/gallery/



Products Used	—
Tegula (Bracken)	
Tegula Setts (Tegula Sett Charcoal)	
Secura Lite (Bracken)	
Additional Info	+



Products Used	—
Tegula (Bracken)	
Tegula Setts (Tegula Sett Golden)	
Secura Lite (Bracken)	
Additional Info	+



SCAN HERE

Paving Visualise

If you can't decide which Tobermore products you would like to use on your project, our Paving Visualise Service can help. Our experts can provide you with a visualisation of what your favourite Tobermore products could look like at your own home.

Visit: tobermore.co.uk/homeowner/design-services/paving-visualise-service/

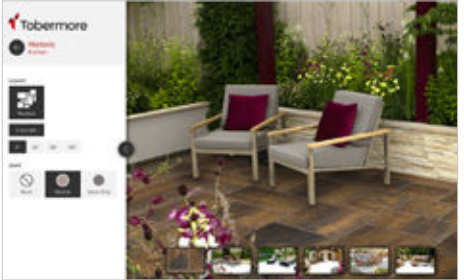


SCAN HERE

Paving Creator

Paving Creator is a free online tool which allows you to select Tobermore products and view how these look in various garden or driveway scenes.

Visit: tobermore.co.uk/homeowner/design-services/paving-creator/



SCAN HERE

Instructions & Warnings

CORE TERMS (PAVING & WALLING)

Product

All products should be carefully inspected for defects or damage upon delivery and prior to being laid or fitted.

Product Information

Within Tobermore, design and development of products is a continuing process, and product information is subject to change without notice. Accordingly, please check with Tobermore to ensure that the product information you have represents the most up-to-date product information.

Prior to Installation

Prior to opening the packs check that all the batch code labels match. The batch code labels can be found on the outer packaging. For example, O4D22N. It is good practice to sort products to ensure consistency of colour, texture and dimensional tolerance. Any defects must be reported without delay. If products are installed with any form of defect which was clearly apparent prior to installation the installer will be responsible for all costs incurred to rectify the issue.

Installation

All products should be installed in accordance with the latest British Standard.

Colour/Shade & Texture

Tobermore produces paving and walling products with excellent density and durability. All products are manufactured in batches using naturally extracted raw materials including aggregates, pigments and cement etc. Products such Braemar, Sienna, Fusion, Mayfair Flags, Manhattan, City Pave and Fusion Kerbs are manufactured using premium naturally occurring granite aggregates. To achieve their final appearance some products undergo secondary processes, this involves shot blasting or grinding the surface of the product.

Whilst we have several factory procedures in place to help control shade, colour and texture within and between batches we cannot guarantee consistency. This is due to the natural materials and secondary processes. Therefore, slight variations in the finished products is normal between and within batches. These variations actually enhance the character and natural beauty of the products.

To achieve the best possible finish we recommend the following advice is followed to evenly distribute any slight variations in shade, colour and texture over a large area.

When the circumstances allow complete one area of paving, one retaining wall or one house / building by using products taken from the same batch. This is achieved by checking the batch code label displayed on the packs.

Always, thoroughly mix products from a minimum of three packs.

Where products are supplied in packs with vertical slices always take them "vertically slice by slice" this ensures that colours are distributed evenly.

When the circumstances do not allow the use of products from the same batch then it is extremely important to minimise possible colour banding /shading by always, thoroughly mixing products from a minimum of three packs concurrently with some overlap between deliveries / batches.

Where products from different batches are being installed in the same area of paving, wall or building it is the installers responsibility to carry out a colour match check by comparing colours from each batch. If a noticeable variance in colour / shade or texture is visible, do not proceed with the installation and contact your supplier for further guidance.

Mixing thoroughly from a minimum of three packs is of particular importance when installing single colours such as Golden, Buff, Natural, Charcoal, Graphite, Silver, Mid-Grey, Sandstone, Alto Silver, Aaron Stone, Jura Grey and Innis Black.

During installation the installer must make regular visual checks to ensure the blending of colours is consistent.

We would always recommend that when purchasing products, especially in larger quantities, that they are all ordered at the same time.

Please note that the colour of new products will inevitably vary compared to those that have been installed for a period of time as weathering does take place. All colour illustrations are as accurate as the printing process will allow. For a more accurate colour match please refer to actual product samples, which can be provided.

Colours and textures illustrated are representations and therefore should not be expected to be an exact match.

The overall visual appearance of a completed installation should only be assessed from the normal viewing distance. Variations in colour/shade and texture are technically harmless, do not affect the products performance and are not deemed to be a product defect.

We will not be held liable for any discolouration or staining caused to product which has been stored incorrectly.

Note: Whilst we strive to ensure consistency, complimentary products such as Kerb Specials, Step Flags, Facing Brick Specials, Historic Circles etc. may not be an exact colour / texture or shade match to the standard version of the product as they will have been manufactured at varying times using different processes.

Tegula

Tegula is manufactured using a secondary process that distresses the edges and corners of the blocks to give the desired aged antique appearance. The process randomly distresses the blocks, therefore some blocks will be more distressed than others will, this is completely normal and does not affect the product performance.

Staining

Some chemicals that are commonly used in gardens such as lawn feed containing Ferrous Sulphate can stain concrete products. Any chemicals that are spilt must be removed immediately by rinsing away with clean water. Please check the information on the instruction label of the container holding the chemical.

As referred to in Tobermore's Conditions of Sale

Moisture

Occasionally, after installation, some units may show variations in shade and have a patchy appearance. This is due to the varying amounts of moisture within the concrete and the ground. The drying out process of concrete continues in-situ after installation. Some units may also retain more moisture than neighbouring units and take longer to dry out. This is caused by the variations in density of the naturally extracted aggregates used in the manufacturing process. Given time and natural weathering, the capillaries within the surface of the concrete will gradually close and any patches or moisture retention will dissipate as the product matures. This does not affect long-term performance.

Efflorescence

Efflorescence is a crystalline deposit that occurs naturally on the surface of concrete materials. It usually appears as a white deposit but can also be brown or yellow in appearance. Tobermore use market-leading technology to significantly suppress the occurrence of efflorescence, however, if it occurs, it may mask the colour of the product for a period of time, but tends to be washed away gradually by rain. Tobermore do not replace products with efflorescence. Packs of products which have had packaging removed should always be re-covered with appropriate packaging to prevent the occurrence of secondary efflorescence.

Surface Scratches

Minor scuffs or bruises may occur during delivery, movement onsite, and installation (for example, during any plate vibrating process). In Tobermore's experience, these marks usually weather off through time.

To reduce the risk of surface scratches we strongly recommend the use of a vibrating plate with a rubber protective mat.

Ordering

To avoid waste, please ensure that your contractor accurately measures the area on site before ordering products. In Tobermore's experience, dimensions taken from a project plan can vary significantly from the final layout.

Depending on the layout of the project, we recommend ordering an additional 2- 5% of material to allow for cutting, detailing and wastage.

Manufacturing & Quality Systems

Tobermore is a BS EN ISO 9001, BS EN ISO 14001 and BES 6001 registered company. Tobermore uses an integrated management system to manage all health & safety and environmental issues.

Product Maintenance

Routine cleaning and maintenance is required to keep the overall appearance of products in pristine condition. All concrete products can develop algae, lichen, and moss growths due to environmental conditions and may require cleaning. Areas adjacent to plant borders and trees may discolour from transfer of plant-life. Tobermore cannot accept responsibility for any of these conditions.

Queries & Complaints

Please contact one of Tobermore's Paving & Walling Centres or offices (contact details at www.tobermore.co.uk) with any queries or complaints. Any complaints must be notified to Tobermore without delay.

CORE TERMS (PAVING ONLY)

Paving installed unbound should have a close joint width of 2-5mm to allow for the dimensional tolerances of products and to create a gap to allow the brushing in of kiln dried jointing sand. The straightness of lines will be dependent on workmanship and product tolerances. String lines must be used to help achieve straight lines.

Tobermore do not recommend Butt jointing as this will make achieving straight lines more difficult.

Product Maintenance

Light coloured paving blocks and flags emphasise tyre marks and oil spills on the driveway. Please note that these products will need more maintenance if overall appearance is to be maintained.

Initial Cleaning

When an area has just been paved, allow it to settle for a few days. After this, you may wish to lightly hose down the paving to remove any excess sand or dirt. The area should then be treated with a weed killer suppressant 2-3 times per year as required.

General Cleaning

Paving requires regular maintenance, including regular sweeping to prevent the build up of detritus. Tobermore recommends that paving is cleaned 2-3 times per year.

For general cleaning of dirt and algae, vigorous brushing with a stiff yard brush with plenty of hot detergent solution (washing up liquid or non-bio washing powder), thoroughly rinsed with clean water, should suffice. Repeated treatment may be required for paved areas sited beneath trees or in permanent/near permanent shade.

A light power hose at medium pressure is generally all that is required to clean general dirt and grime. Any jointing material which is removed must be replaced. Do not use high pressure powerwashers as aggressive power-washing can damage the product surface. A trial area should be tested before large scale powerwashing takes place.

Moss, Lichen and Algae

Thick growths of moss or lichen must be removed first by scraping out the joints and then treating the area with a moss killer such as anti-moss paving cleaner. Anti-moss is designed to remove moss, lichens and algae. It is best applied in dry weather. After being applied it will take a few days to be fully effective. Once the moss and lichens have been killed, they can easily be brushed off. Anti-moss also leaves a residue in the sand joint which will help reduce the likelihood of re-growth. The manufacturer's instructions should always be followed when using any cleaning agent.

Weeds

Large weeds should be removed by hand and then the area treated with a weed killer (available from any good garden centre). Smaller weeds can then be treated directly with weed killer and these weeds should start to die within days. The manufacturer's instructions should always be followed when using any weed killing agent.

Block Paving Sealer

It is possible to seal block paving with a resin material which combats staining and weed growth and which also enhances colour and appearance. The acrylic sealer is sprayed onto the block paving and forms a 'skin' on top of the paving and the jointing material giving an easily maintained finish. The manufacturer's instructions should always be followed when using any sealing agent.

FOR HYDROPAVE PRODUCTS

Installation - Hydropave

Tobermore recommends that its Hydropave products be installed in conjunction with a BS EN 7533-13:2009 designed permeable paving system.

Note: A permeable paving design relies heavily on using the correct aggregates. Prior to installation, we would ask you to test both the 4/20mm coarse graded aggregate and also the 6.3-2mm bedding and jointing grit as per the relevant British Standard specification (BS EN 13242:2002). In particular, the material should be categorised as LA20 according to Table 9, SZ18 according to Table 10 and MDE15 according to Table 11 within this standard. The grit should be insoluble in dilute hydrochloric acid and should be naturally occurring material. In our experience, incorrect use of aggregates is one of the most common reasons for failure of a permeable paving system.

Joint Filling

All joints must be filled to the top with 6.3 – 2mm grit to prevent movement and spalling of the blocks. We recommend that after a few weeks use, any joints which have settled and are not full, are topped up with grit. Joints should be kept filled at all times. You will need approximately one tonne of grit for every 100m² of 80mm paving.

Note: Care should be taken that the permeable joints do not become contaminated as work on the scheme is completed. Special care needs to be taken when soft landscaping is carried out so that soil does not enter the joints. When this type of work is being carried out, the surface of the permeable paving should be protected by an appropriate cover to protect the joints from being contaminated.

Hydropave Maintenance

Please refer to Tobermore's detailed 'Permeable Paving Maintenance Guidelines' available on our website: www.tobermore.co.uk

FOR EASYCLEAN PRODUCTS

Handling & Installation

During installation, the surface should be protected at all times from scratching and abrasion.

Once the protective glue dot has been removed do not stack flags directly on top of each other.

Use a plate vibrator with a rubber mat.

Do not scratch the surface with tools. (Spade, trowel etc.)

User advice

Do not drag garden furniture across the surface of the flags.

Do not pressure wash.

Do not use chemical cleaning products (e.g. solvents/acids).

FOR FACING BRICK & COUNTRY STONE PRODUCTS

Important Note:

Where the circumstances allow, it is beneficial to complete one building / structure using bricks taken from one batch and mixed on site from a minimum of 3 packs to avoid colour banding / shading. If the circumstances do not allow for this then it is important to minimise the possibility of banding / shading by always mixing bricks from 3 packs concurrently with some overlap between deliveries.

Where the site conditions allow, it will also be beneficial to take receipt of as many bricks as possible at an early stage to maximise colour consistency throughout the site.

Installation – Facing Bricks

Please refer to Tobermore's detailed 'Guide to the use of Tobermore Concrete Bricks' available on our website: www.tobermore.co.uk

Installation – Country Stone

Tobermore's Country Stone products are designed to recreate traditional stone sizes and to co-ordinate with standard cavity wall construction. When used in housing projects, a clear cavity must be retained.

All work must be protected during construction and must be designed and built in accordance with accepted industry standards and practice. Builders familiar with conventional brickwork will find that similar installation principles apply.

Joints can be finished flush or tooled depending on the overall effect required. Raked joints are not recommended. It is vital that all horizontal and vertical joints between Country Stone blocks must be compacted and free from voids. Shell bedding should not be used.

Good Practice during Construction - Facing Bricks & Country Stone

- If mortar dry's on the surface of the bricks it will stain the product and may not be removed.
- Mortar extruding from joints should be removed when the mortar is wet and during the process of laying.
- Any mortar smears on the brick surface should be removed by dry or wet brushing.
- Scaffolding should be installed as per regulatory instructions. Please note that mortar can drop and hit the scaffolding and then also go onto the wall. You should inspect the work area at all times to ensure the brick surface remains mortar free.
- When it rains be careful that any wet mortar on the scaffolding does not get 'splashed' onto the wall.
- When work stops or is interrupted by inclement weather conditions, brickwork should be protected immediately with polythene sheeting that is held in place with a suitable fixing. If new brickwork is not protected efflorescence, patchy mortar colour, patchy brickwork and staining can occur.
- Bricks should always be covered with polythene sheets to avoid getting damp or dirty when not being used.

General Cleaning Advice - Facing Bricks & Country Stone

- It is always important to keep bricks as clean as possible while laying and tooling. See Good Practice above.
- If mortar has been allowed to dry on the surface of the bricks the options you have to clean it off are as follows; Each process should be tested first and should ensure the facing bricks are not damaged - Dry brushing b. Wet brushing c. Using a 'like coloured' brick to rub the stained brick d. Pressure washing - should only be used as a last resort as it will damage the surface and the mortar joint if not completed correctly (this method cannot be attempted until the area has been allowed to set for a minimum of 7 days).
- Acid cleaning should be avoided.

Movement Joints and Mortar Guidance - Facing Bricks & Country Stone

1. NHBC recommends that walls constructed of concrete masonry units should have vertical movement joints included every 6m to allow for drying/shrinkage, see PD6697:2019, maximum ratio for brickwork panels is to be 3:1 length : height. PD6697:2019 gives advice on joint positions, the benefit of brickwork reinforcement at window openings is also covered in the same document. Movement joints should be planned prior to commencing any construction to enable them to be concealed behind down pipes etc. and ensure the aesthetics of buildings are maintained.
2. It is important to ensure that the mortar specified for the construction is suitable for the contract, see table 15 of PD6697:2019 - class M4 is the maximum recommended for normal external masonry walls. This should not be exceeded when using Tobermore Concrete facing bricks and Country Stone Walling.
3. We would recommend that you discuss this guidance with all parties involved in the design, construction and installation of the scheme. We also recommend that you refer to BS EN 1996-1-1 and PD6697:2019.
4. Specific professional advice should be obtained at all times before commencing building work.

Important Guidance Information: Tobermore Concrete Facing and Country Stone Walling

1. Professional advice, specific to the project, should be sought before commencement of the building work.
2. Tobermore Facing Bricks have different properties to clay bricks especially in relation to moisture movement. Please refer to 'Guide to the Use of Tobermore Concrete Facing Bricks', which is available on request or at www.tobermore.co.uk
3. Tobermore recommends that vertical movement joints be spaced at no more than 6m apart. Panels of brickwork where the length: height ratio exceeds 3 are particularly vulnerable to cracking; if they cannot be avoided, they should include movement joints at closer centres.
4. Movement joints should be planned prior to any construction so that they can be concealed behind drainpipes etc. Further guidance on moisture movement is available in the 'Guide to the Use of Tobermore Concrete Facing Bricks' and BSI documents BSEN 1996 (Eurocode 6) and PD 6697 (Recommendations for Design).
5. It is important to ensure that the mortar specified is suitable for the construction, see Table 15 of PD 6697. Mortar of strength class M4 will generally be suitable. Please refer to 'Guide to the use of Tobermore concrete facing bricks', which is available on request.
6. When building with dissimilar materials allowances should be made for differential movement. Design guidance from a structural engineer should be sought when combining dissimilar materials such as clay and concrete facing bricks. Examples of using dissimilar materials would be where a clay brick is used to build up to the dpc level and then Tobermore concrete facing bricks are used above the dpc. In some circumstances the dpc acts as a slip plane to separate the two materials which helps to dissipate tensile stress. However expert guidance should always be sought as to ensure structural stability as further slip planes or bed reinforcement may need to be incorporated into the design.
7. It is recommended that this guidance is discussed with all persons involved in the design and construction of the building work.

FOR SECURA PRODUCTS

Installation - Secura

All Secura products should be installed in accordance with British Standard BS8002. When constructing a retaining wall, ensure that you follow the design provided by the scheme engineer.

Contact Us

GB: 0844 800 5736

NI: 028 7964 2411

ROI: 048 7964 2411

technical@tobermore.co.uk

sales@tobermore.co.uk

tobermore.co.uk

roisales@tobermore.ie

tobermore.ie

Tobermore Paving Centres

Bangor

028 9185 2545

bangoroffice@tobermore.co.uk

